



Š i f r a u č e n c a :

Državni izpitni center



N 1 4 1 2 4 1 2 1

6.
razred



Ponedeljek, 12. maj 2014 / 60 minut

Dovoljeno gradivo in pripomočki: Učenec prinese modro/črno nalivno pero ali moder/črn kemični svinčnik.

NACIONALNO PREVERJANJE ZNANJA
v 6. razredu

NAVODILA UČENCU

Natančno preberi ta navodila.

Prilepi kodo oziroma vpiši svojo šifro v okvirček desno zgoraj na tej strani.

Pri vsaki nalogi svoj odgovor napiši v predviden prostor znotraj okvirja oziroma razpredelnice.

Natančno preberi navodilo posamezne naloge in jo reši.

Najprej poslušaj govorniki besedili in reši nalogi slušnega razumevanja.

Nato reši še preostale naloge v preizkusu.

Piši čitljivo. Če se zmotiš, napačni odgovor prečrtaj in pravilnega napiši na novo.

Na koncu svoje odgovore ponovno preveri.

Želimo ti veliko uspeha.

Preizkus ima 16 strani, od tega 3 prazne.



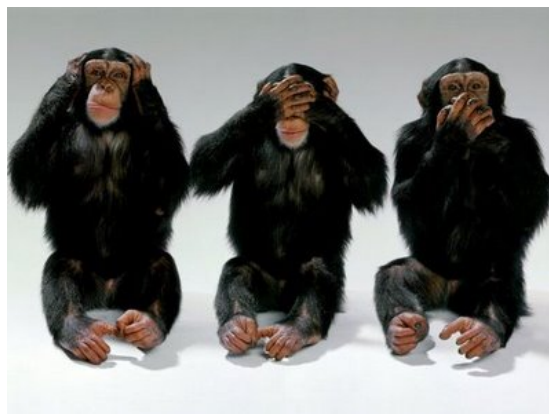
N 1 4 1 2 4 1 2 1 0 3

A) SLUŠNO RAZUMEVANJE

1. naloga

Poslušaj zgodbo o navihanih opicah. Preberi trditve v razpredelnici in s kljukico označi, ali so pravilne ali napačne. Oglej si primer 0, ki je že rešen.

MONKEY SEE, MONKEY DO



		PRAVILNO	NAPAČNO
0.	The children go into town in the afternoon.		✓

		PRAVILNO	NAPAČNO
1.	The children go shopping for clothes.		
2.	The monkeys wake the children up.		
3.	The children repeat everything the monkeys do.		
4.	One of the children gives the monkeys sweets.		
5.	The children throw their scarves to the monkeys.		
6.	The story is about how to make new friends.		

(6 točk)

(Vir slike: http://klearchosguidetothegalaxy.blogspot.com/2008_06_01_archive.html.
Pridobljeno: 21. 5. 2012.)



2. naloga

Poslušaj zgodbo o deklici Nini. Preberi vprašanja in pri vsakem obkroži črko pred izbranim odgovorom. Oglej si primer 0, ki je že rešen.

BADGES, BADGES, BADGES

0. Which activity is Nina attending at Goldfield Elementary?

- A Girl Scouts.
- B Badge Collectors.
- C Art Club.

1. Why is Nina's uniform without badges?

- A She isn't at the same school as before.
- B She isn't as active as the other students.
- C She doesn't like the scouts.

2. What happens to Nina at the pet store?

- A She gets a puppy to take home with her.
- B She is afraid and runs home to her parents.
- C She finds out something new about herself.

3. Where does Nina try to win her First Aid Badge?

- A At the hospital.
- B At the school.
- C In the playground.



N 1 4 1 2 4 1 2 1 0 5

4. Why does Tommy need medical help?

- A He hurt himself.
- B A schoolfriend hit him.
- C He has a headache.

5. Who helps Nina create an Art Club?

- A Her friend Cheryl.
- B A famous artist.
- C A school teacher.

6. What do we learn from the story?

- A Everybody has a special talent.
- B It's difficult to find a true friend.
- C Badges are more important than activities.

(6 točk)



(Viri slik:

<http://openclipart.org/detail/139741/bird-badge-by-jimmyboy99>

<http://openclipart.org/detail/79903/fall-2010-bage-logo-by-inky2010>

<http://openclipart.org/detail/71011/donors-badge-by-ronnes>. Pridobljeno: 25. 5. 2012.)



N 1 4 1 2 4 1 2 1 0 7

CONFIDENT	DOCTOR	FLAG	FRIENDS
GENERAL	JEWELLERY	SEATTLE	SPECIALITY
STAND	TEACHER	TESTS	

0. Nathan Hale High School is in Seattle.

1. The school walls are similar to the _____.

2. In some of their unusual subjects, students take photos or make _____.

3. The name of the school magazine is _____.

4. When students have problems, they can go and see a _____.

5. Children do different things at _____ camps.

6. Teenagers think camp is good because they get more _____.

(6 točk)



N 1 4 1 2 4 1 2 1 0 9

0. **What** are the children making outside?

A snowman.

1. **What** is the family waiting for at lunchtime?

2. **Who** puts plates on the table?

3. **Where** in the house is Dad's present for the family?

4. **What** does Mom want to do when she comes to the living room?

5. **What** does Dad do at Christmas when he wears Christmas lights?

6. **Who** does Dad wish a happy holiday to?

(6 točk)



This is Tina's room. She likes it very much and makes sure it's always tidy. There is a cosy bed by the window, and on it her teddy **(0) b e a r**. Next to the bed is her desk, full of things she needs for school. On the **(1) f** _____ under it, she keeps her school bag and guitar. She has music lessons twice a week.

She is also interested in art, especially drawing with coloured pencils, and you can see her best **(2) p** _____ above her pillow, next to the window. The window **(3) g** _____ is always clean, because she likes watching the neighbour's dogs playing in the garden.

Tina has her favourite books on the **(4) s** _____ above her bed. She reads a page or two every night before she goes to bed. Once a week, she waters the flowers by the window and the **(5) p** _____ on the wardrobe.

Tina is a very good pupil and studies every afternoon. Her **(6) n** _____ is lying open on her desk, because she still has to do her homework. Are you like Tina? Does your room look like this?

(6 točk)

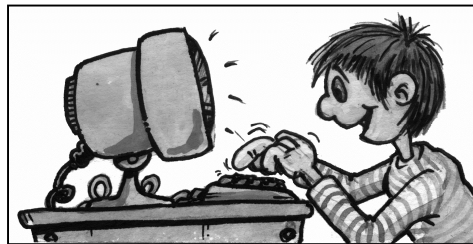


N 1 4 1 2 4 1 2 1 1 3

D) PISNO SPOROČANJE

Tvoj angleški prijatelj Peter, s katerim si dopisujeta po elektronski pošti, bi rad izvedel več o kraju, kjer živiš. Napiši mu pismo in:

- opiši svoj domači kraj (mesto/vas),
- napiši, kaj lahko počneš v svojem kraju in okolici poleti in pozimi,
- prijatelju zastavi vsaj tri vprašanja o njegovem domačem kraju.



Dear Peter,

Bye for now,

Your friend from Slovenia

Vsebina:	4 točke
Besedišče in pravopis:	3 točke
Slovnica:	3 točke

Skupno število točk: 48

Tukaj ne piši. Tukaj ne piši. Tukaj ne piši. Tukaj ne piši. Tukaj ne piši. Tukaj ne piši. Tukaj ne piši. Tukaj ne piši. Tukaj ne piši. Tukaj ne piši.



N 1 4 1 2 4 1 2 1 1 5

Prazna stran

