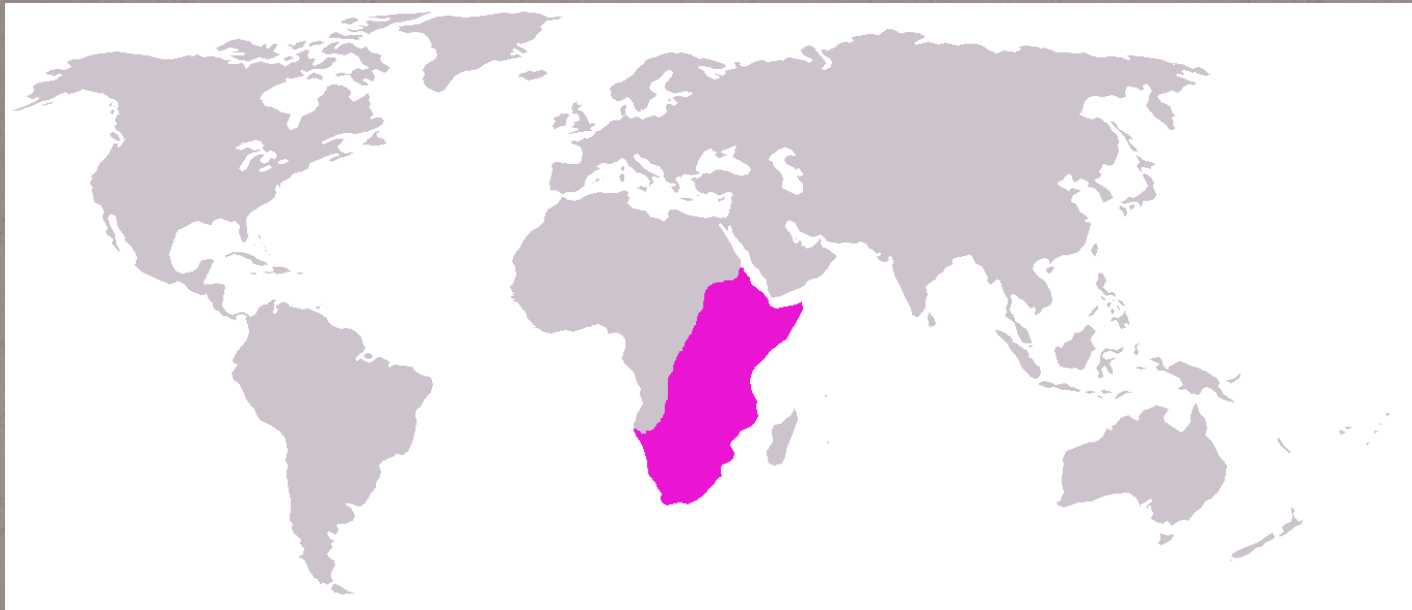


# GIRAFFE



# About giraffe...

- is related to deer and cattle, but is placed in a separate family, the Giraffidae,
- Its range extends from Chad to South Africa





## •Female giraffes:

- are 30-60 cm shorter
- 200-400 kg less than males



## •Male giraffes :

- 4.8-5.5 m tall
- 1300-1700 kg

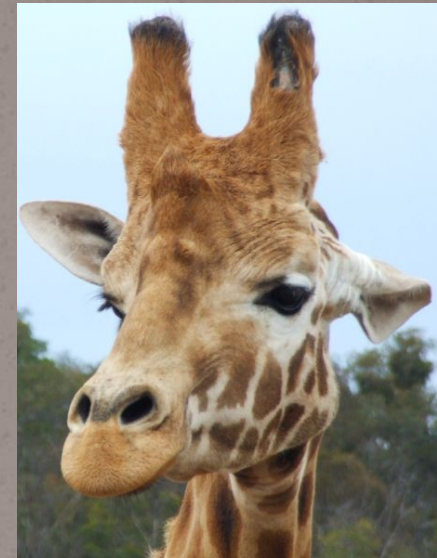
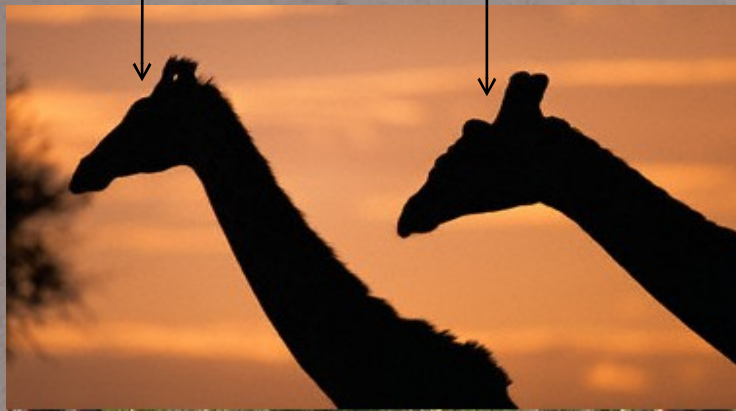




- Horns:

female

male



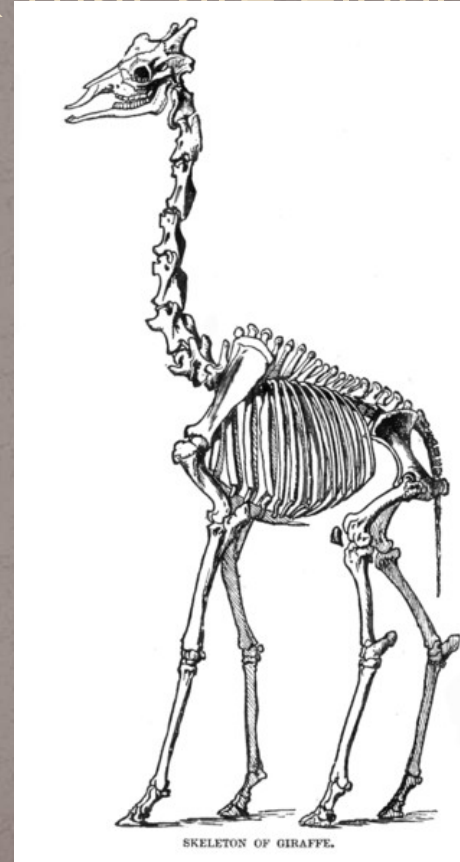
- identifying the sex of giraffes:

- females displaying tufts of hair on the top of the horns,
- males' horns are larger and more prominent.



# ● Neck:

- long necks which they use to browse tree leaves
- seven vertebrae in the neck that are elongated





- **Legs and pacing:**

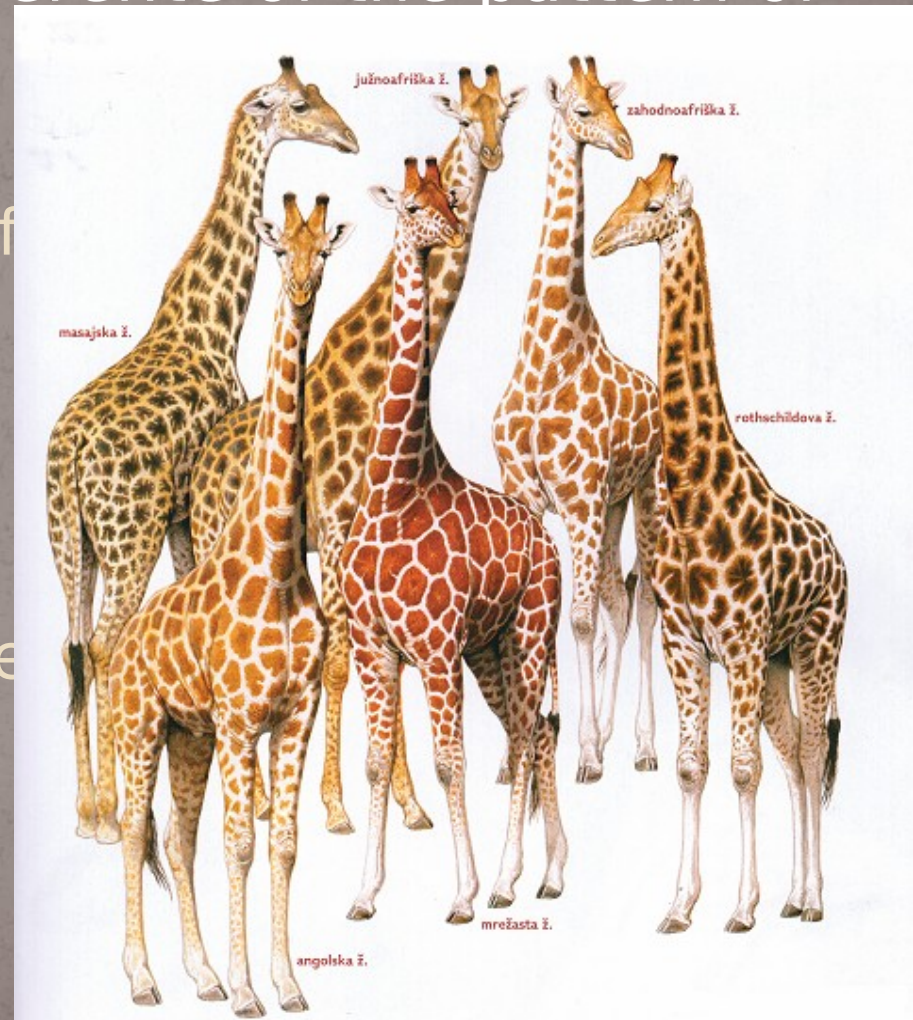
- have slightly elongated forelegs, about 10% longer than their hind legs
- The pace of the giraffe is an amble
- it can run extremely fast, up to 55 km/h
- at low speed:
  - the left legs moving together followed by
- at high speed:
  - the back legs crossing outside the front
- giraffe defends itself with a powerful



- Spots:

- We know a lot of many diferent spesces of giraffe, they are diferente of the pattern of spots:

- 1.Sauth African Giraffe
- 2.Smoky Giraffe
- 3.Masai Giraffe
- 4.Somali Giraffe
- 5.Rothschild Giraffe
- 6.Northern Giraffe





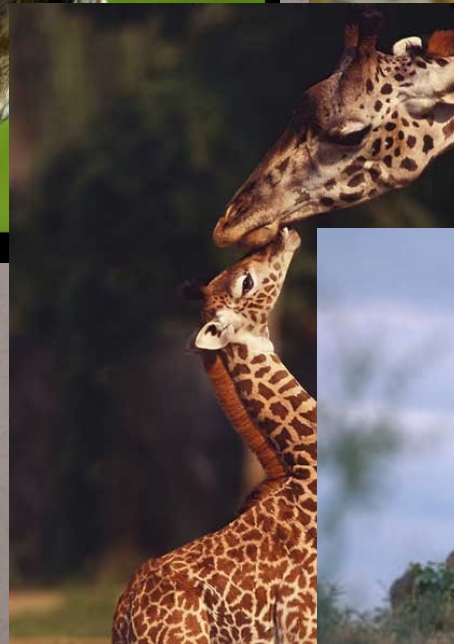
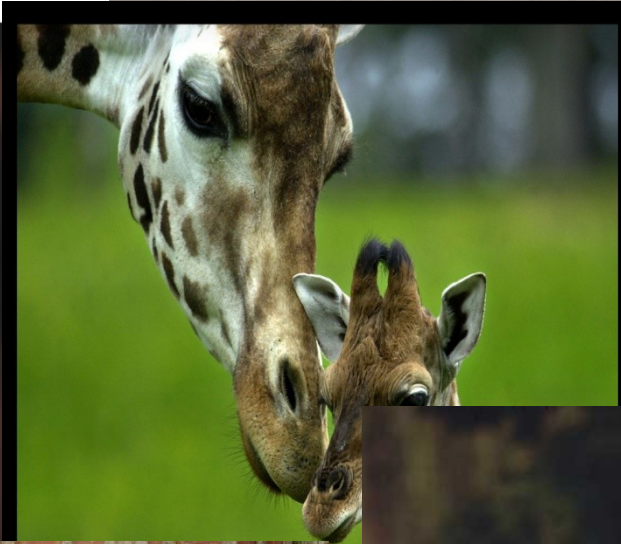
# Food...

- browses on the twigs of trees
- it can live without inconvenience on other vegetable food
- 63 kg of leaves and twigs daily





# Some pictures....



**Thank you for  
whaching!**

