

Japanese history, language and animation

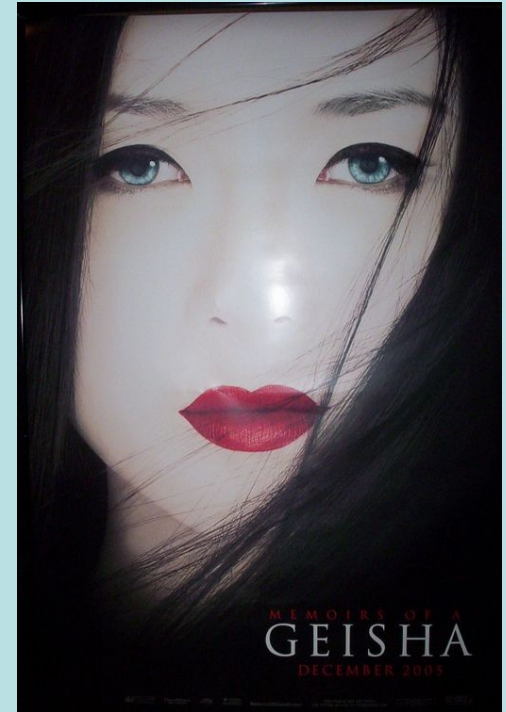


HISTORY

- First settlements in 12000 BC
- Great influence from China 1000 BC – 1000 AD

HISTORY II

- Feudal Japan with Shogun and Daimyo, isolationism for 7 centuries



In 1853 they opened to the world

HISTORY III

- The 1st and the 2nd World War-in the 1st they were at the winning side, at the second they lost, the occupation after the war
- Extremely quick developement



4 writings:

- Rōmaji (ローマ字)
- Katakana (片仮名)
- Hiragana (平仮名)
- Kanji (漢字)
(Dainkawa Jiten)

月日は百代の過客にして、行かふ年も又旅人也。舟の上に生涯をうかべ、馬の口とらえて老をむかふる物は、日々旅にして旅を栖とす。古人も多く旅に死せるあり。予もいづれの年よりか、片雲の風にさそはれて、漂泊の思ひやまず、海濱にさすらへ、去年の秋、江上の破屋に蜘蛛の古巢をはらひて、やゝ年も暮、春立る霞の空に白川の関こえんと、そゞろ神の物につきて心をくるはせ、道祖神のまねきにあひて取もの手につかず、もゝ引の破をつより笠の緒付かえて、三里に灸すゆるより、松嶋の月先心にかゝりて、住る方は人に譲り杉風が別墅に移るに、

草の戸も住替る代ぞひなの家
面八句を庵の柱に懸置。

Japanese animation

- First introduced in the beginning of the 20th Century
- Golden age: 1970s, 1980s.



Genres

- Bishōjo



- Ecchi



- Bishonen



- Kodomo



Genres II

- Mecha



- Sentai



Shōnen-ai



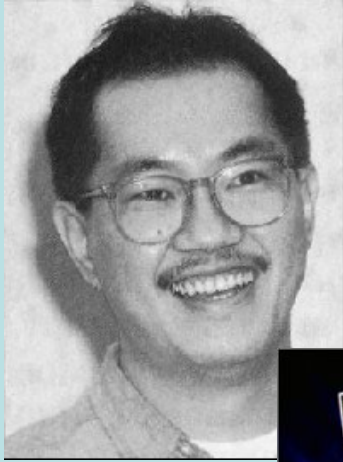
Shōjo-ai



Anime stereotypes



Legends of animation



Where to study japanese?

- Short courses
- Faculty of Arts
- Go to Japan! ^-^

Domo arigato gozaimasu!

