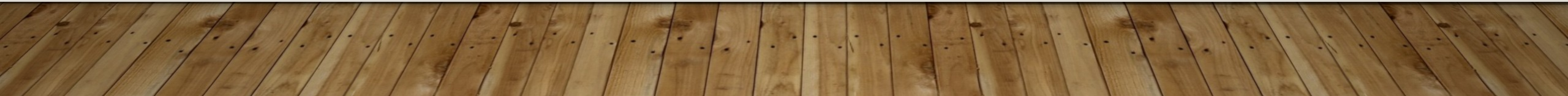


SOUTH AFRICA



LOCATION

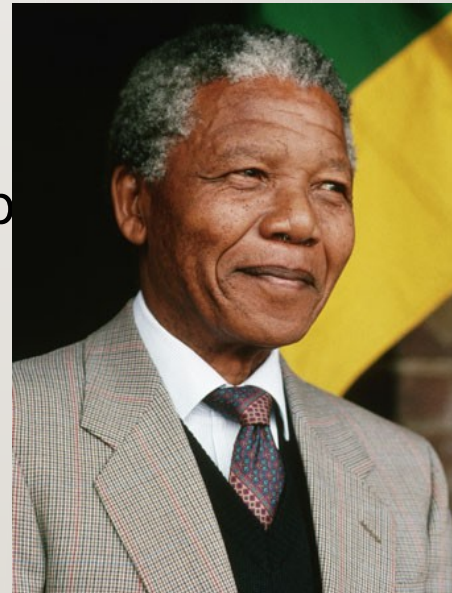
- South Africa is located in Africa, in the most southern point
- Bordering countries and oceans:
- Swaziland, Botswana, Namibia, Mozambique
- Indian and Atlantic ocean

- Population: 44,8 million people
- Large: 1 221 073 km²



HISTORY

- Nominated 100 000 years ago
- Nelson Mandela first president
- First poeple Sani
- 31.5.1961 (JAR) South Africa republ



NELSON MANDELA

- First president
- Born: 18 july 1918 in Mvezo
- Died: 5 december 2013
- Opponent of Apartheid



CAPITALS

- Pretoria(Seet of parliament), Bloemfontein, Cape town(Seat of goverment)



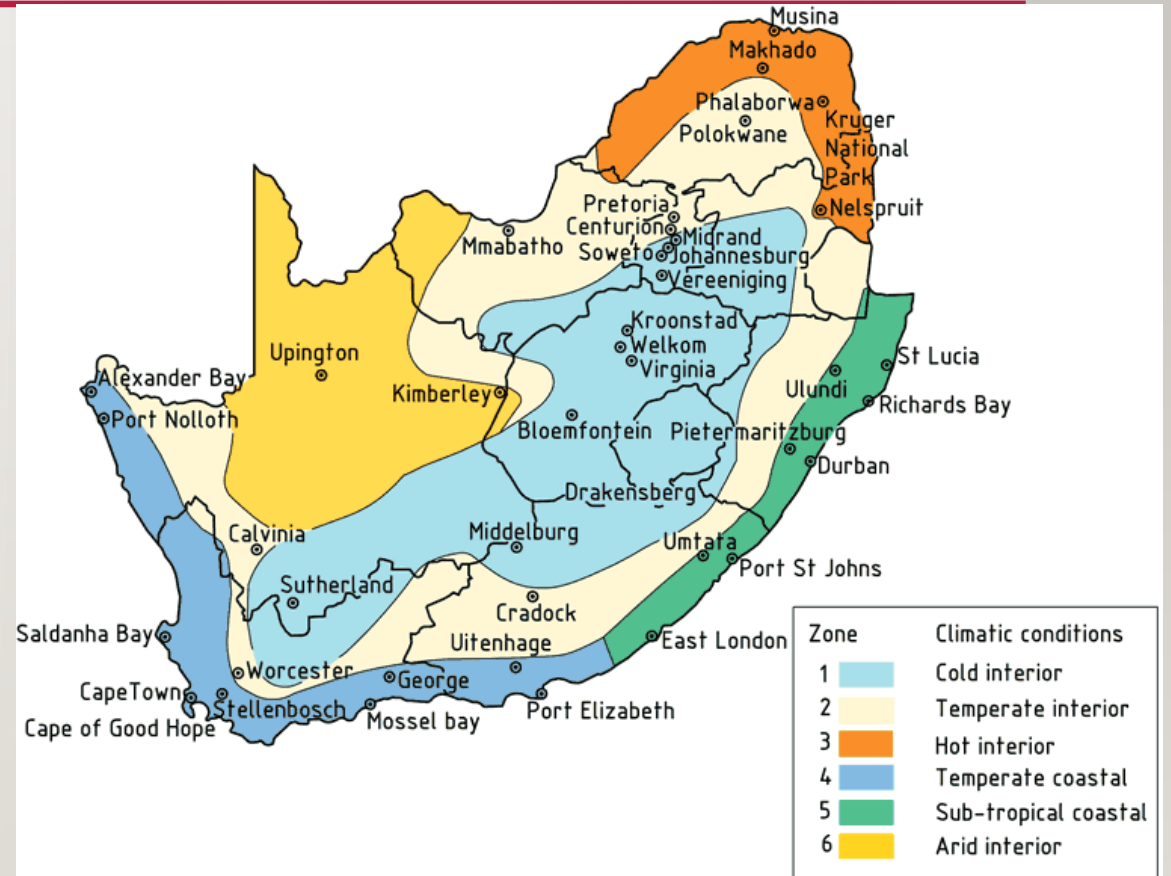
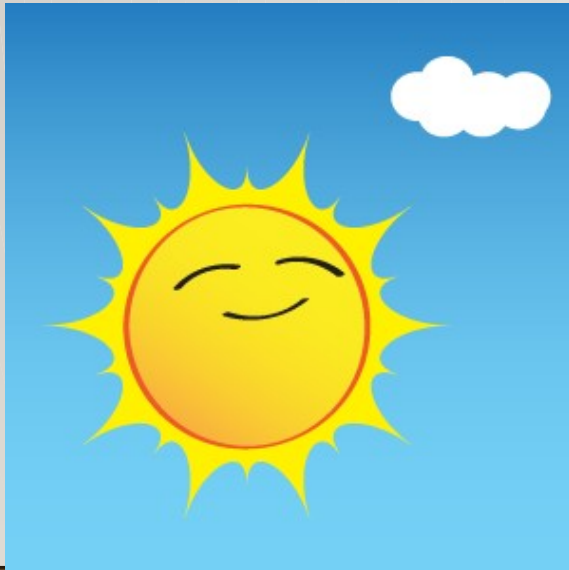
LANGUAGES

- Afrikan
 - English
 - Sotho
 - Swazi
 - Xshosa
-



CLIMATE

- Climate is subtropical
- a lot rainfalls
- Medium hot



ATTRACTION

- Table mountain
- Cango cave
- Nelson Mandela Square
- Union Building
- Blyde river canyon



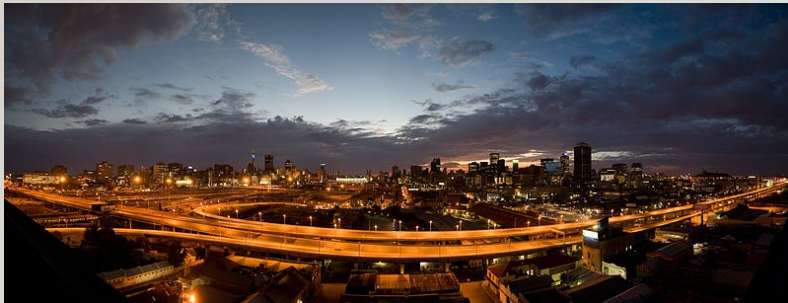
GOVERNMENT

- Jacob Zuma
- Cyril Ramaphosa (deputy president)
- The parliament house is in Capital city



ECONOMY AND INDUSTRY

- Farming, mining, and automobile industry
- Currency is Rand in denominations 10, 20, 50, 100 and 200
- Johannesburg: economy capital city



RELIGION

- 97.7% of people are Christian



SPORT

- Football
- Rugby
- Cricket



FOOD

- „Potije“ food like in the old ages
- Rise and meat traditional food



**THANKS FOR YOUR
ATTENTION**

