




MORSKI JEŽEK

Echinoidea

SEMINARSKA
NALOGA

PREDMET: NARAVA

GLOKOŽCI

- Morski ježek spada med iglokožce
 - Značilnosti:
 - Apnenčasto ogrodje
 - Bodice
 - Življenje na dnu morja
- 
- A close-up photograph of a sea urchin, a marine invertebrate with a spherical body covered in sharp spines. It is resting on a light-colored, sandy or silty seabed. The background is a soft-focus view of the ocean floor.

ŽIVJENSKO

OKOLJE

- slano morje
- v večjih skupinah
- Onesnažen

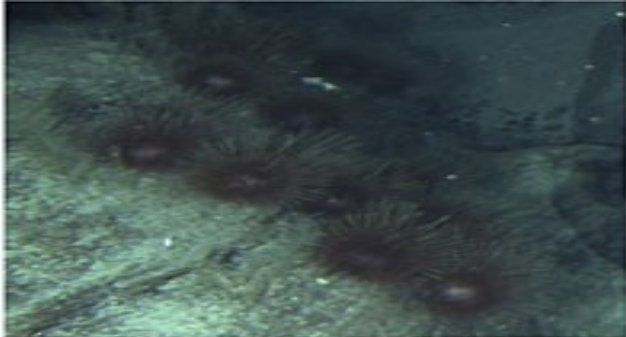


DIHANJE in PREHRANJEVANJE

- ДУМАСИКОПРЕБЖОА
- РИСКІСРІБЕЈЕМРАДІАВОДЕ
- МАЙΘΙΝΘΖΩΑΝΙΕΓΑ
СИСТЕМА

RAZMNOŽEVANJE

- MAJHNA RDEČA JAJČECA-
rdeče pikice
- SAMICA PROIZVAJA
JAJČECA
- SAMEC PA SEMENČECA
- POSTOPEK:
- SEMENČECE OPLODI



25220801-Caenopedina-sp1-SS1106-020-20550.tif



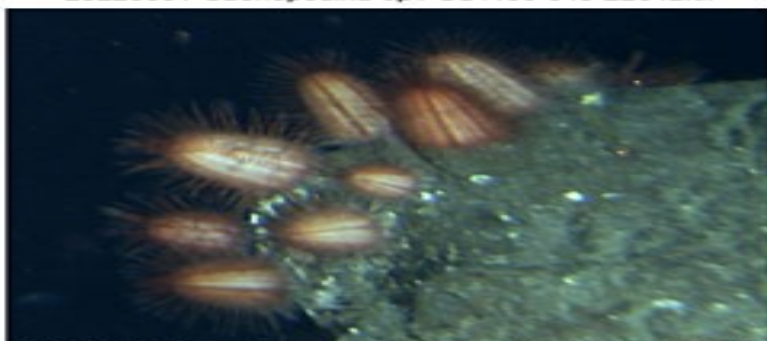
25220801-Caenopedina-sp1-SS1106-021-20637.tif



25220801-Caenopedina-sp1-SS1106-040-22642.tif



25246001-Dermechinus-horridus-a-SS1106-020-20391.tif



25246001-Dermechinus-horridus-b-SS1106-020-20391.tif



25246001-Dermechinus-horridus-SS1106-020-20512.tif



25246001-Dermechinus-horridus-SS1106-021-20594.tif



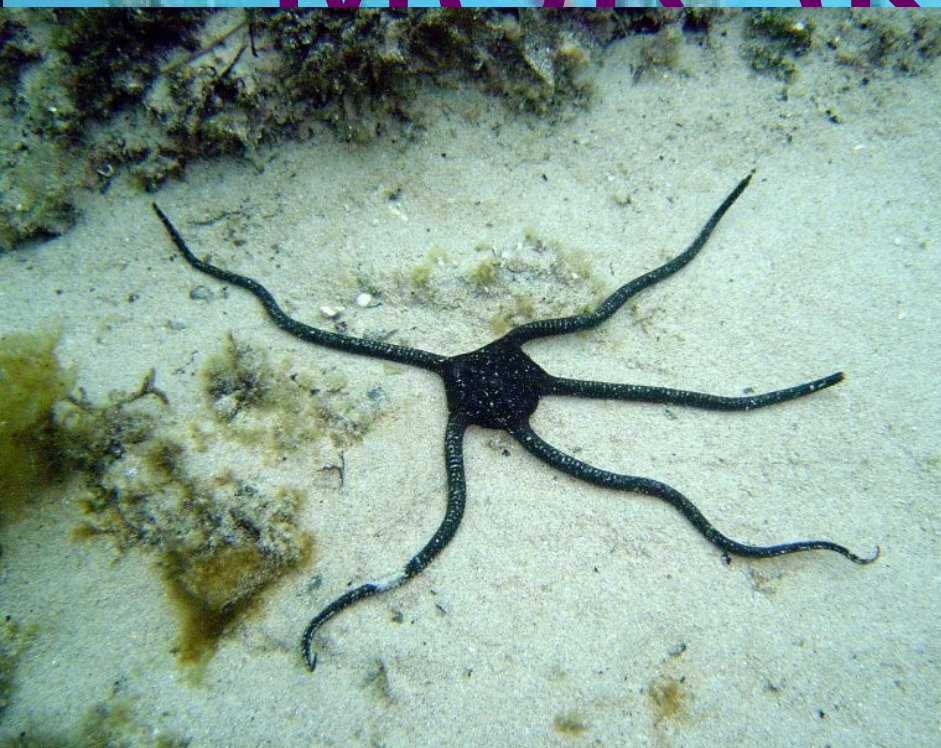
25246001-Dermechinus-horridus-SS1106-024-21119.tif

PREDSTAVNIKI

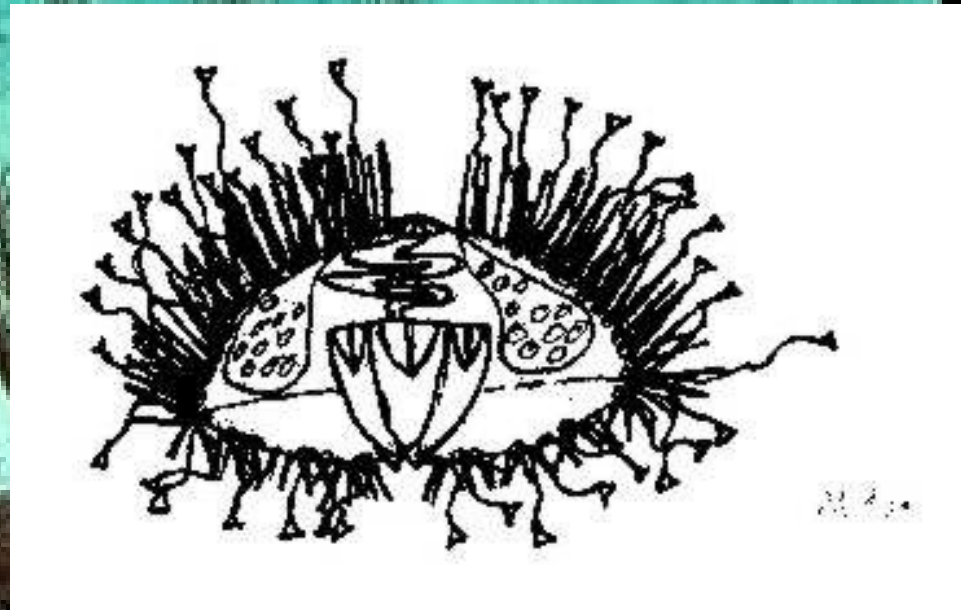
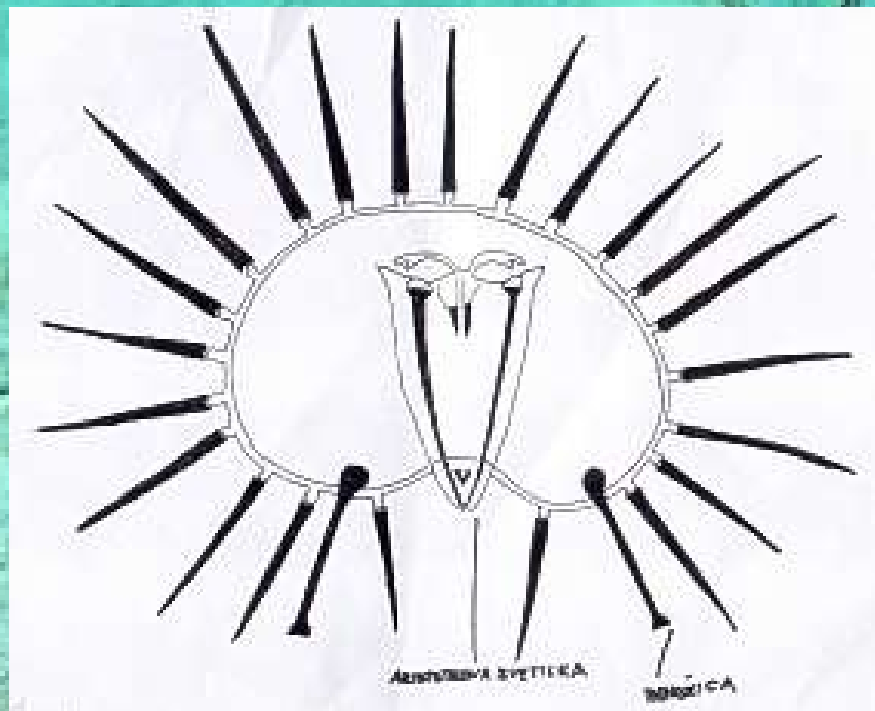
- KAČJEREP
- BRIZGAČ
(1000 vrst)
- MORSKE
LILIJ
- MORSKA
ZVEZDA

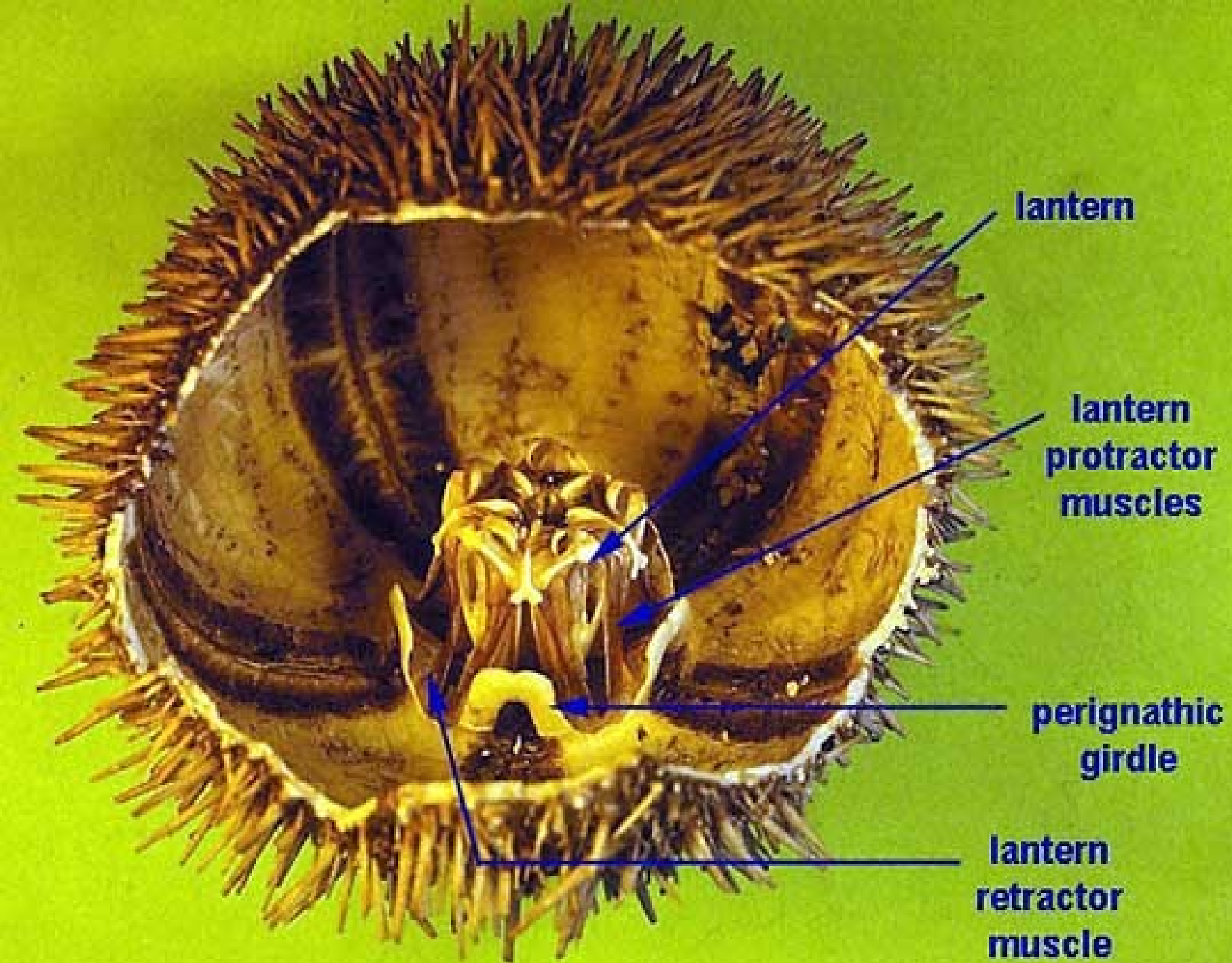


KACJEREP in MORSKA LILJA



ZGRADBA





lantern

**lantern
protractor
muscles**

**perignathic
girdle**

**lantern
retractor
muscle**



Anus

Madreporite



Spines

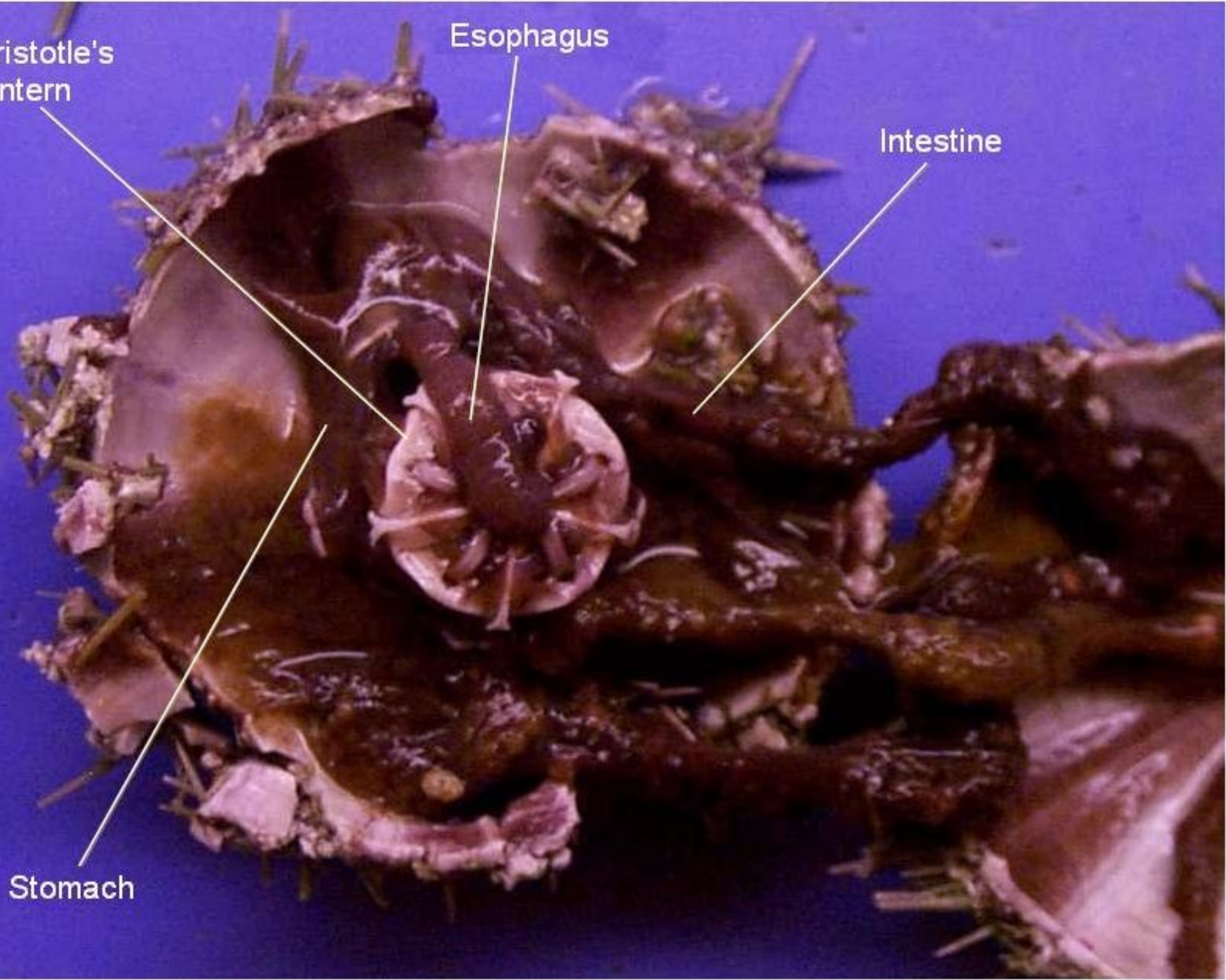
Mouth

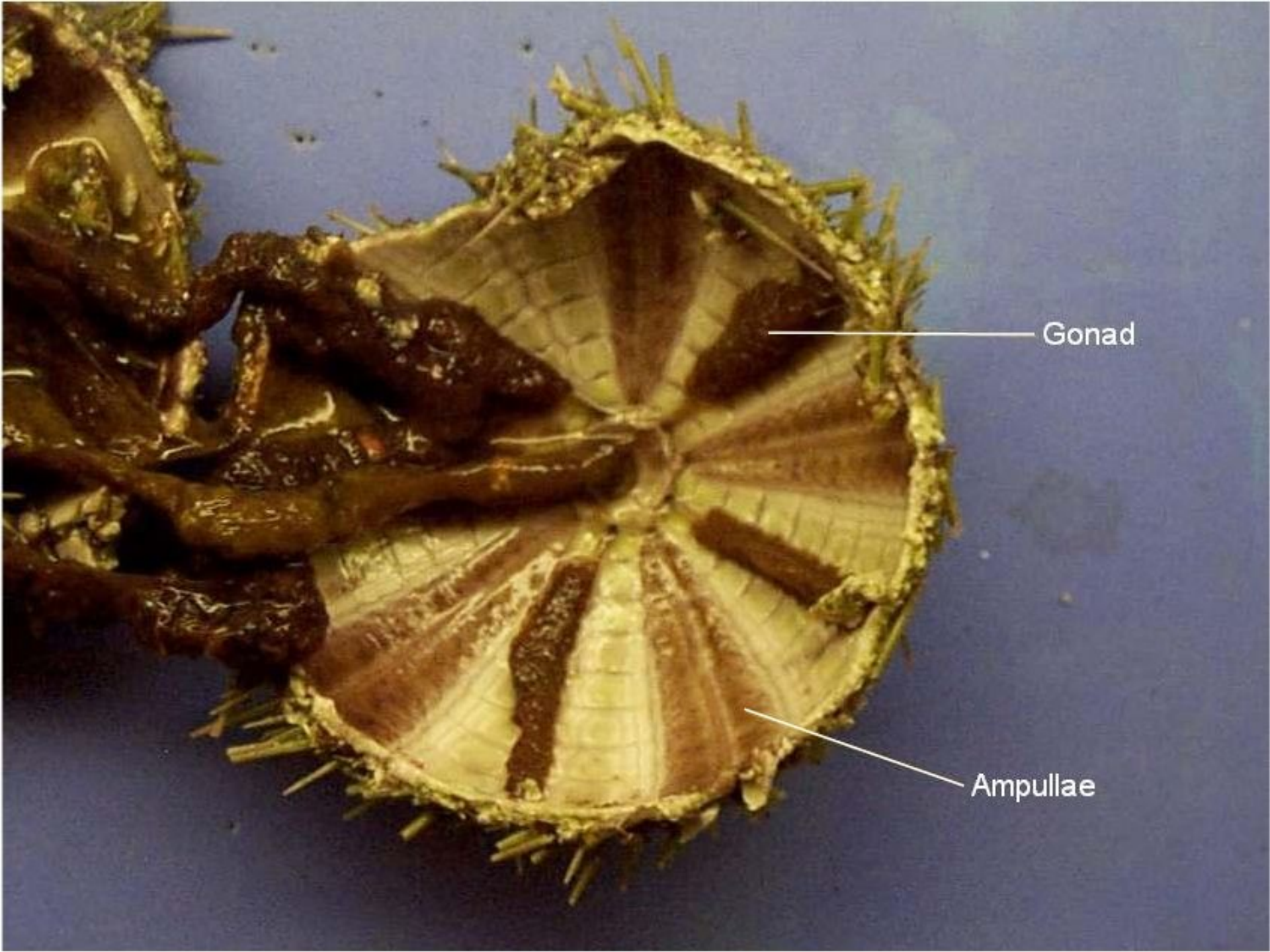
Aristotle's
lantern

Esophagus

Intestine

Stomach





Gonad

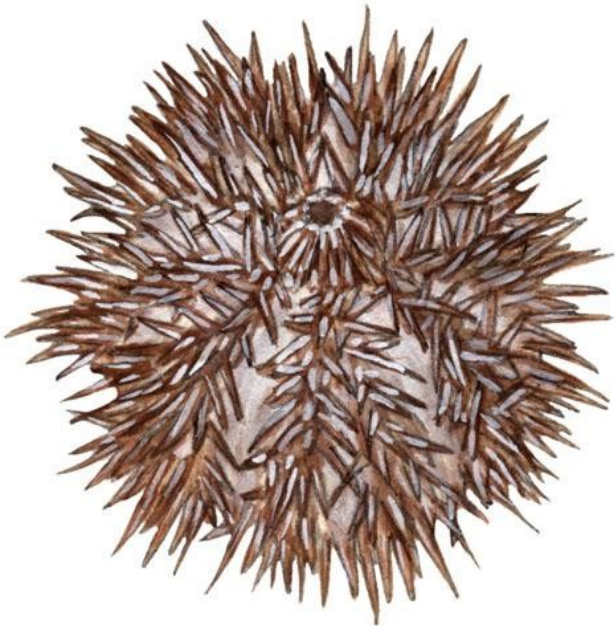
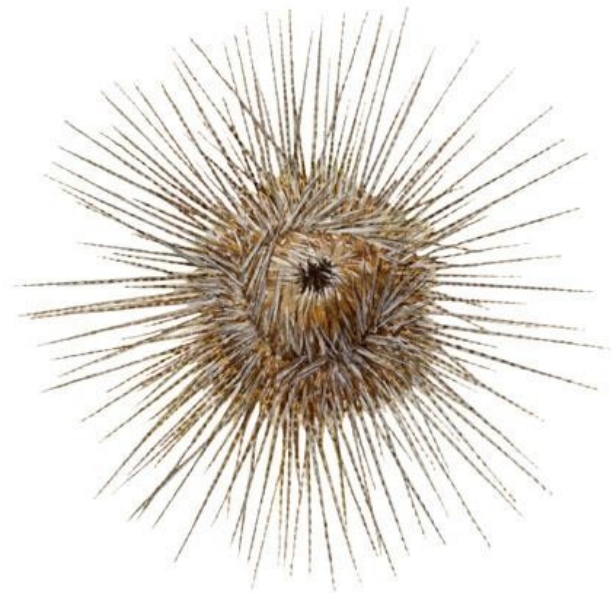
Ampullae

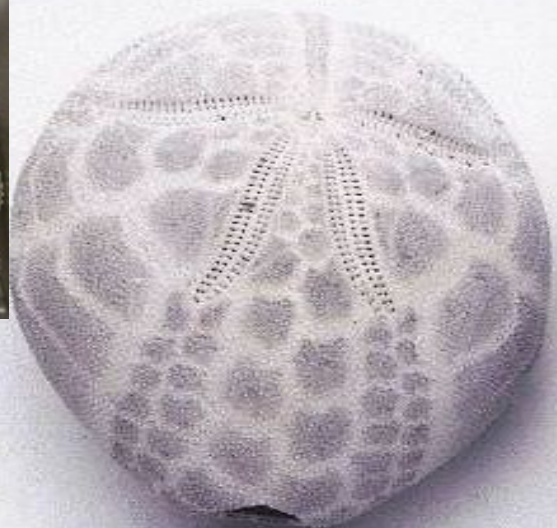
ZANIMIVOSTI

- Ko ježu odpadejo vse bodice je primeren za okras saj se spremeni v pisane barve









KONEC

VIRI:

- Whitelaw, I., Življenje v morju, Ljubljana: Mladinska knjiga 1995
- Angerer, T., Biologija, Ljubljana: Državna založba Slovenije 1985
- Lousy, P., Moja enciklopedija-morje, Španija : Učila 2007
- slike: www.google.si , 5.6.2008