



Šifra kandidata:

Državni izpitni center



M 0 4 2 5 8 1 1 1

JESENSKI ROK

GLASBA

≡ Izpitna pola A ≡

Glasbeni stavek

Četrtek, 2. september 2004 / 190 minut

Dovoljeno dodatno gradivo in pripomočki: kandidat prinese s seboj nalivno pero ali kemični svinčnik, svinčnik, šilček in radirko. Kandidat dobi tri ocenjevalne liste, tri ocenjevalne obrazce in dva konceptna lista z notnim črtovjem.

SPLOŠNA MATURA

NAVODILA KANDIDATU

Pazljivo preberite ta navodila. Ne izpuščajte ničesar!

Ne obračajte strani in ne začenjajte reševati nalog, dokler Vam nadzorni učitelj tega ne dovoli.

Prilepite kodo oziroma vpišite svojo šifro (v okvirček desno zgoraj na tej strani, na ocenjevalne obrazce in na konceptna lista).

Pišite z navadnim svinčnikom, nazadnje pa vse napisano prevlecite s kemičnim svinčnikom ali nalivnim peresom. Če rešitve ne bodo prevlečene s kemičnim svinčnikom ali nalivnim peresom, se ovrednotijo z nič (0) točkami. Osnutke odgovorov lahko pišete na konceptna lista z notnim črtovjem.

Izpitna pola je sestavljena iz dveh delov, A in B. Del A vsebuje dve nalogi (harmonizacijo soprana in basa) in del B eno (izdelava triglasnega moteta s tremi epizodami na dano temo).

Za harmonizacijo soprana in basa sta podatka že vpisana v za reševanje določeni prostor. Pri harmonizaciji soprana napišite pod basovo melodijo ustrezne generalbasne in funkcijske označbe, pri harmonizaciji basa pa le funkcijske označbe.

Za izdelavo triglasnega moteta je podana tema le za prvo epizodo, za drugo in tretjo epizodo pa jo oblikujete sami. Za vašo rešitev je v poli pripravljen prostor. Podano temo glede na izbiro glasov in začetek vpišete sami ter nadaljujte pisanje.

Pri testu je mogoče doseči največ 100 točk.

Pišite natančno in čitljivo.

Zaupajte vase in v svoje sposobnosti. Želimo Vam veliko uspeha.

Ta pola ima 12 strani, od tega 4 prazne.

PRAZNA STRAN

Obrnite list.

A

A1: SOPRAN

o(3)

#

o

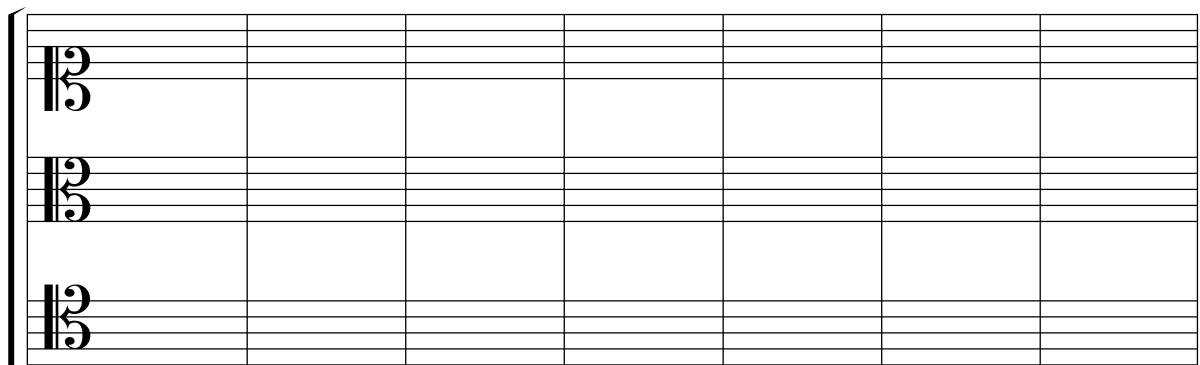
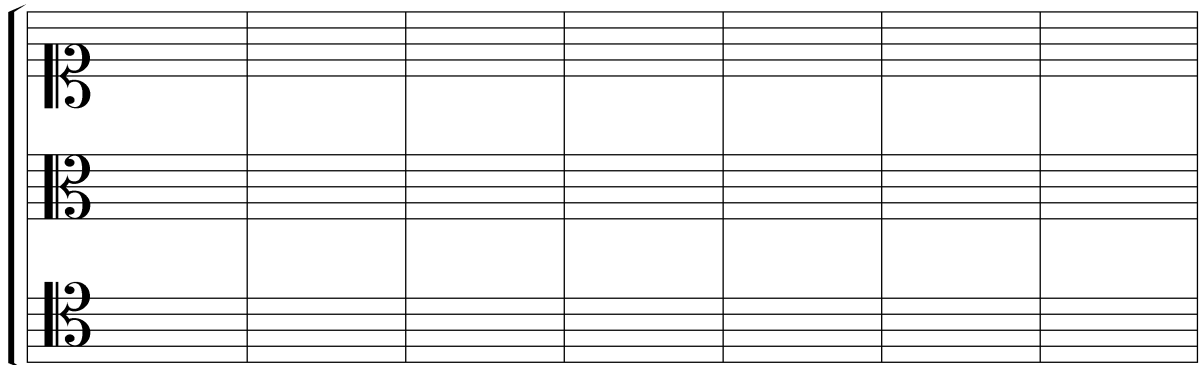
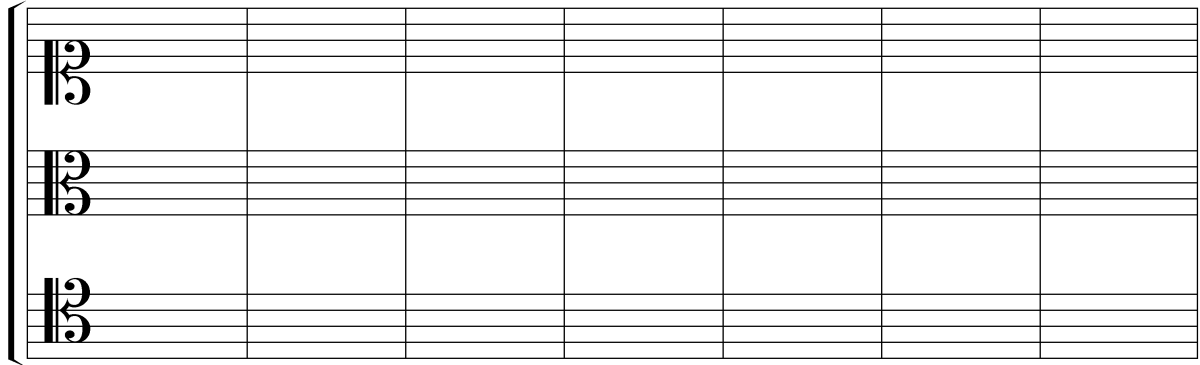
A2: BAS

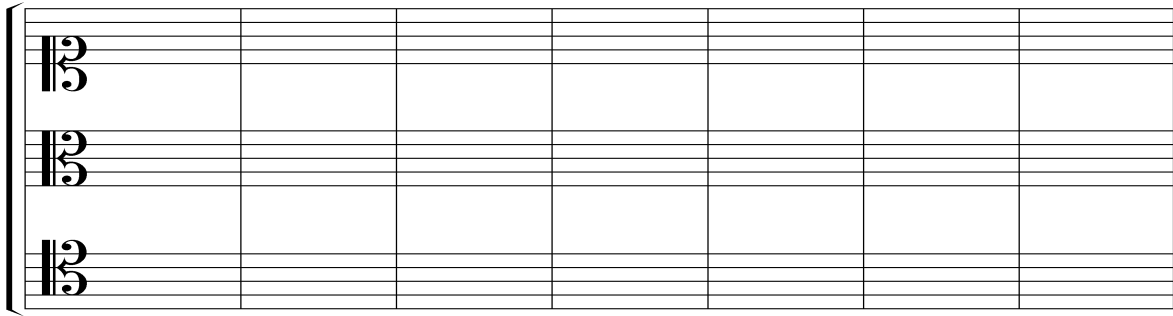
o(8)

6 6 6 6 #6 7 8 7
4 6 6 5 4 3

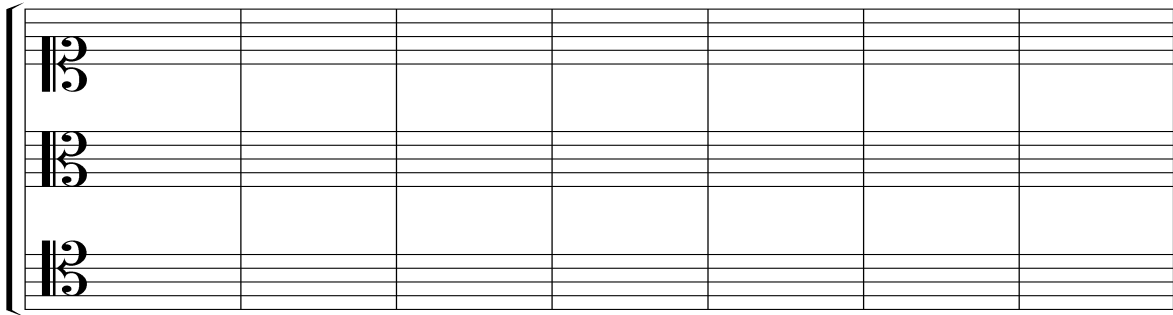
8 7 4 6 7 7 6 6 #6 # #4
4 3 3 5 7 4 2 6 4 3 2

6 #6 #6 8 7 #9 #9 8 8 #6 7 #
4 4 4 5 5 8 4 4 # 7

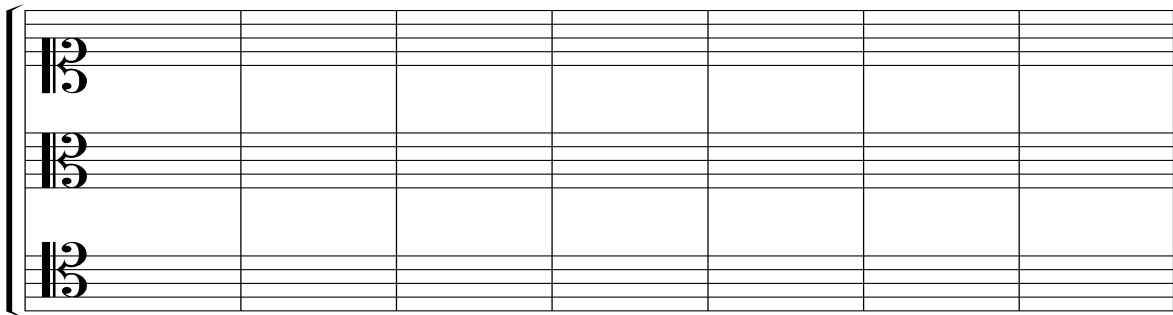
B: TEMA ZA TRIGLASNI MOTETNI STAVEK



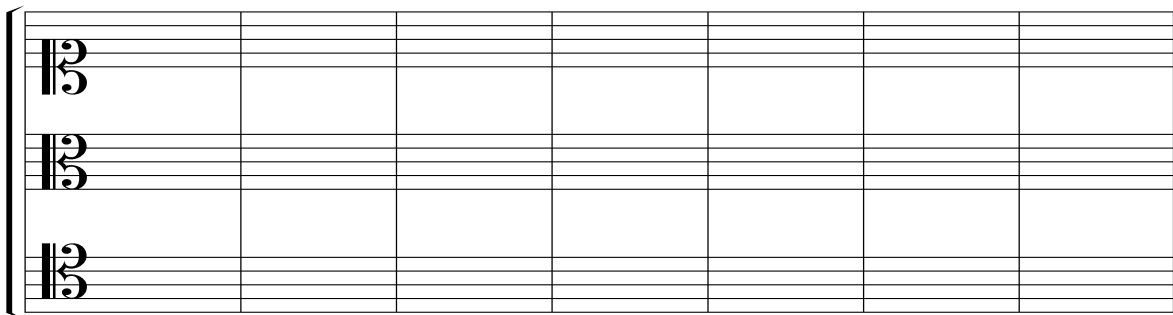
A musical staff system consisting of three staves. Each staff begins with a treble clef. The system is divided into seven measures by vertical bar lines. The staves are currently empty.



A musical staff system consisting of three staves. Each staff begins with a treble clef. The system is divided into seven measures by vertical bar lines. The staves are currently empty.



A musical staff system consisting of three staves. Each staff begins with a treble clef. The system is divided into seven measures by vertical bar lines. The staves are currently empty.



A musical staff system consisting of three staves. Each staff begins with a treble clef. The system is divided into seven measures by vertical bar lines. The staves are currently empty.




A musical staff system consisting of three staves. Each staff begins with a treble clef and a key signature of one flat (B-flat). The staves are empty, with a light gray shaded area at the bottom of the third staff.




A musical staff system consisting of three staves. Each staff begins with a treble clef and a key signature of one flat (B-flat). The staves are empty.




A musical staff system consisting of three staves. Each staff begins with a treble clef and a key signature of one flat (B-flat). The staves are empty.




A musical staff system consisting of three staves. Each staff begins with a treble clef and a key signature of one flat (B-flat). The staves are empty.

OSNUTEK

PRAZNA STRAN

PRAZNA STRAN

PRAZNA STRAN