



Šifra kandidata:

Državni izpitni center



SPOMLADANSKI ROK

GLASBA

≡ Izpitna pola A ≡

Glasbeni stavek

Ponedeljek, 24. maj 2004 / 190 minut

Dovoljeno dodatno gradivo in pripomočki: kandidat prinese s seboj nalivno pero ali kemični svinčnik, svinčnik, šilček in radirko. Kandidat dobi tri ocenjevalne liste, tri ocenjevalne obrazce in dva konceptna lista z notnim črtovjem.

SPLOŠNA MATURA

NAVODILA KANDIDATU

Pazljivo preberite ta navodila. Ne izpuščajte ničesar!

Ne obračajte strani in ne začenjajte reševati nalog, dokler Vam nadzorni učitelj tega ne dovoli.

Prilepite kodo oziroma vpišite svojo šifro (v okvirček desno zgoraj na tej strani, na ocenjevalne obrazce in na konceptna lista).

Pišite z navadnim svinčnikom, nazadnje pa vse napisano prevlecite s kemičnim svinčnikom ali nalivnim peresom. Če rešitve ne bodo prevlečene s kemičnim svinčnikom ali nalivnim peresom, se ovrednotijo z nič (0) točkami. Osnutke odgovorov lahko pišete na konceptna lista z notnim črtovjem.

Izpitna pola je sestavljena iz dveh delov, A in B. Del A vsebuje dve nalogi (harmonizacijo soprana in basa) in del B eno (izdelava triglasnega moteta s tremi epizodami na dano temo).

Za harmonizacijo soprana in basa sta podatka že vpisana v za reševanje določeni prostor. Pri harmonizaciji soprana napišite pod basovo melodijo ustrezne generalbasne in funkcijske označbe, pri harmonizaciji basa pa le funkcijske označbe.

Za izdelavo triglasnega moteta je podana tema le za prvo epizodo, za drugo in tretjo epizodo pa jo oblikujete sami. Za vašo rešitev je v poli pripravljen prostor. Podano temo glede na izbiro glasov in začetek vpišete sami ter nadaljujte pisanje.

Pri testu je mogoče doseči največ 100 točk.

Pišite natančno in čitljivo.

Zaupajte vase in v svoje sposobnosti. Želimo Vam veliko uspeha.

Ta pola ima 12 strani, od tega 4 prazne.

PRAZNA STRAN

Obrnite list.

A

A1: SOPRAN

o(3)

Musical notation for the first system of A1: SOPRAN. It consists of a grand staff with a treble clef and a bass clef. The key signature has three flats (B-flat, E-flat, A-flat). The time signature is common time (C). The melody in the treble clef starts with a quarter note G4, followed by quarter notes A4, B4, and C5. The second measure contains a whole note B4. The third measure contains quarter notes C5, B4, and A4. The fourth measure contains a dotted half note G4. The bass clef part is empty.

Musical notation for the second system of A1: SOPRAN. It consists of a grand staff with a treble clef and a bass clef. The key signature has three flats (B-flat, E-flat, A-flat). The time signature is common time (C). The melody in the treble clef starts with a dotted half note G4. The second measure contains quarter notes A4, B4, and C5. The third measure contains quarter notes D5, C5, and B4. The fourth measure contains quarter notes A4, G4, and F4. The fifth measure contains quarter notes E4, D4, and C4. The sixth measure contains quarter notes B3, A3, and G3. The bass clef part is empty.

Musical notation for the third system of A1: SOPRAN. It consists of a grand staff with a treble clef and a bass clef. The key signature has three flats (B-flat, E-flat, A-flat). The time signature is common time (C). The melody in the treble clef starts with a dotted half note G4. The second measure contains quarter notes A4, B4, and C5. The third measure contains quarter notes D5, C5, and B4. The fourth measure contains a whole note A4. The fifth measure contains a whole note G4. The bass clef part is empty.

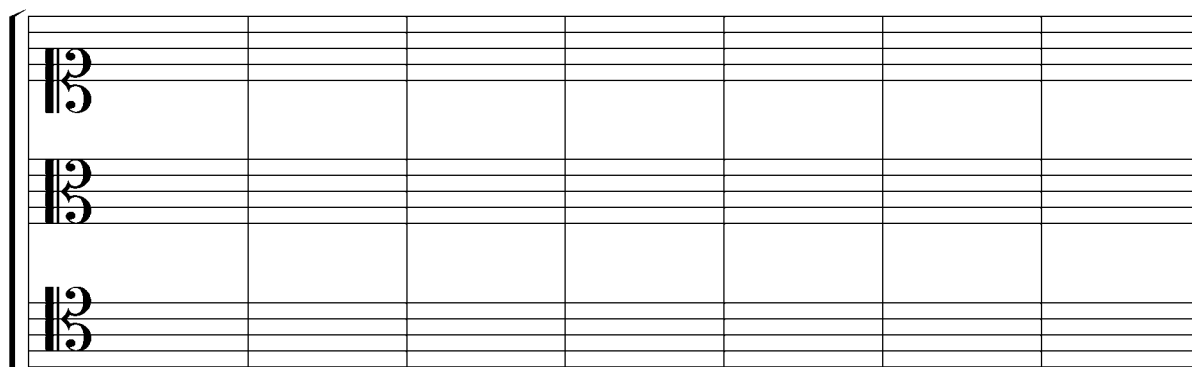
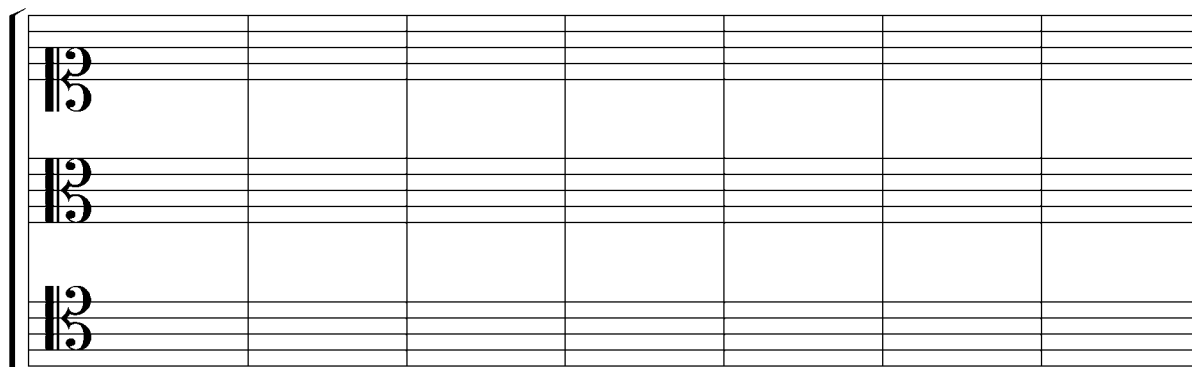
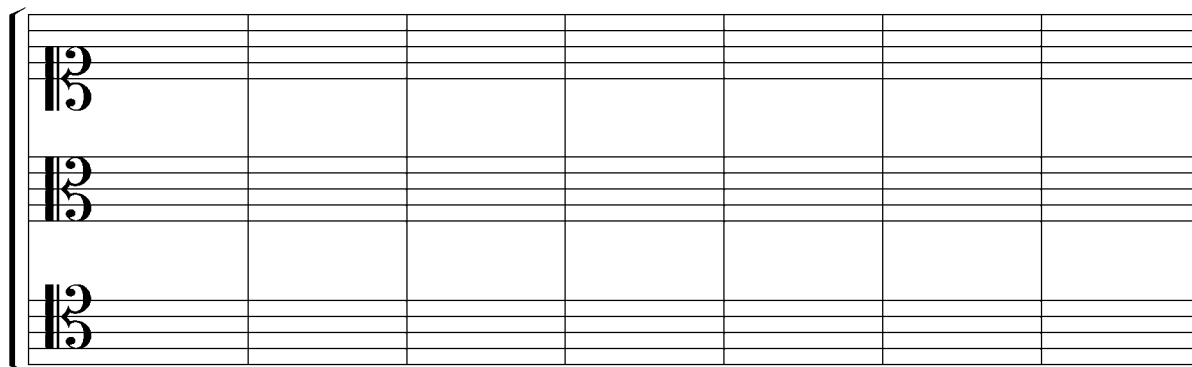
A2: BAS

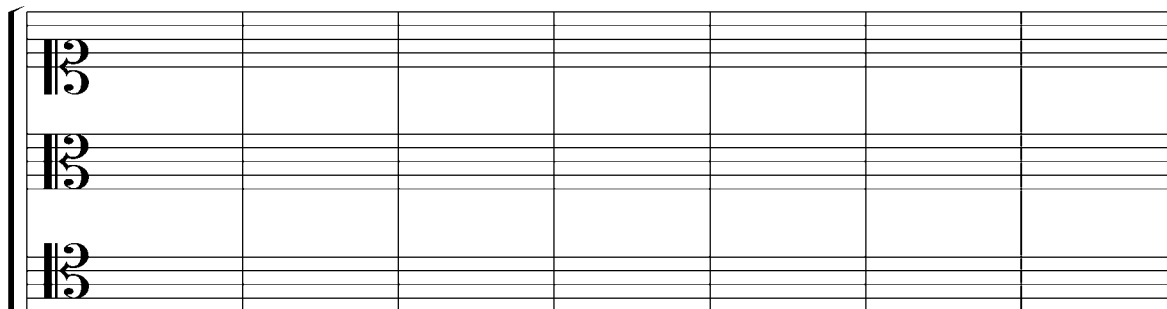
š(3)

6 6 5 — — 6 10 6 6 6 7 6 —
4 6 — 6 — 6 — 6 4 6 3 5 3

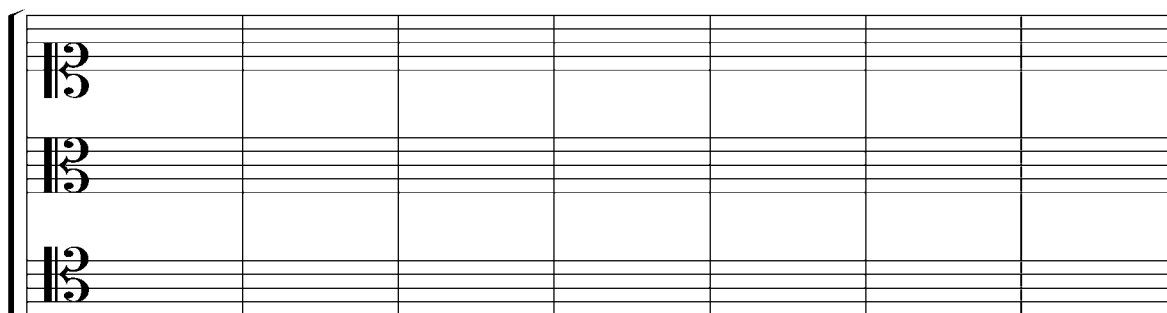
6 6 #6 6 7 11 10 4 7 #6 6
4 4 5 4 4 3 — 3 5 — 4

5 #4 #4 #6 #4 13 12 11 7 4 3 6 #6 6 8 —
2 — 3 4 #4 3 6 6 6 7 4 3 3 3 3 4 7 —
3 3 3 3 3 3 4 4 3

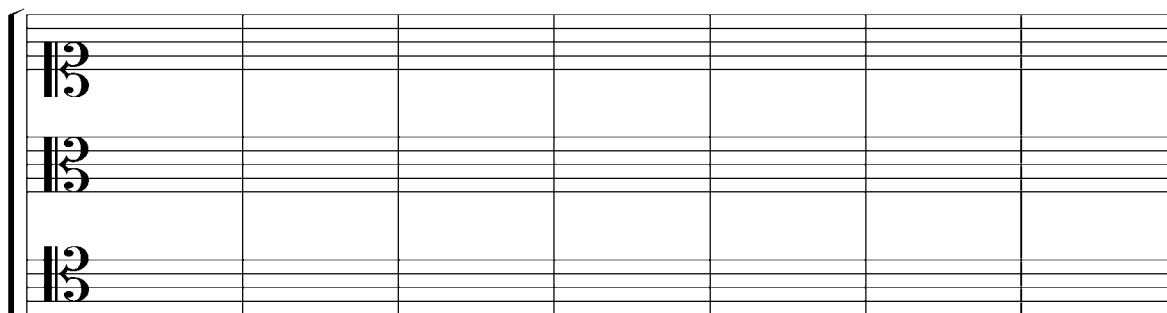
B: TEMA ZA TRIGLASNI MOTETNI STAVEK



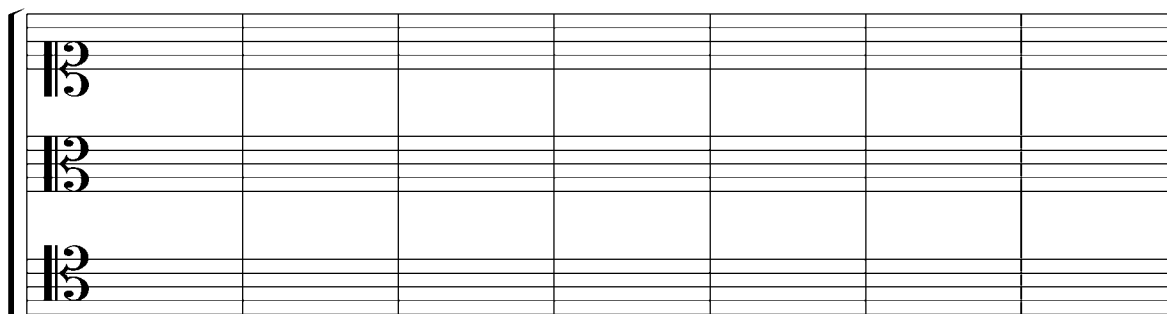
A musical staff system consisting of three staves. Each staff begins with a treble clef and a key signature of one flat (B-flat). The staves are empty, with vertical bar lines dividing the system into seven measures.



A musical staff system consisting of three staves. Each staff begins with a treble clef and a key signature of one flat (B-flat). The staves are empty, with vertical bar lines dividing the system into seven measures.



A musical staff system consisting of three staves. Each staff begins with a treble clef and a key signature of one flat (B-flat). The staves are empty, with vertical bar lines dividing the system into seven measures.



A musical staff system consisting of three staves. Each staff begins with a treble clef and a key signature of one flat (B-flat). The staves are empty, with vertical bar lines dividing the system into seven measures.




A musical staff system consisting of three staves. Each staff begins with a treble clef and a key signature of one flat (B-flat). The staves are empty, with vertical bar lines dividing the measures.




A musical staff system consisting of three staves. Each staff begins with a treble clef and a key signature of one flat (B-flat). The staves are empty, with vertical bar lines dividing the measures.




A musical staff system consisting of three staves. Each staff begins with a treble clef and a key signature of one flat (B-flat). The staves are empty, with vertical bar lines dividing the measures.




A musical staff system consisting of three staves. Each staff begins with a treble clef and a key signature of one flat (B-flat). The staves are empty, with vertical bar lines dividing the measures.

OSNUTEK

PRAZNA STRAN

PRAZNA STRAN

PRAZNA STRAN