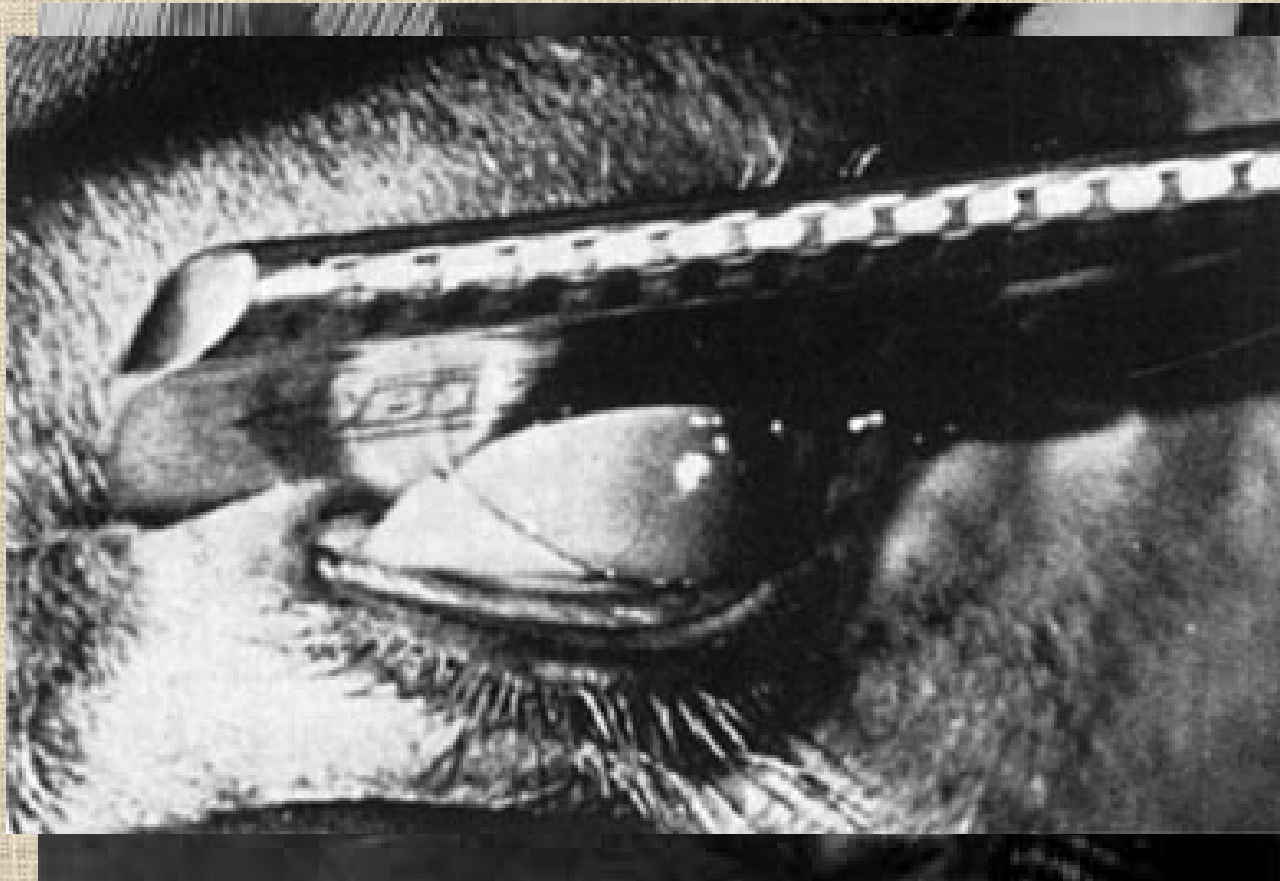


# SURREALIZEM



Deli se v dve smeri:

- **VERIČNI** surrealizem

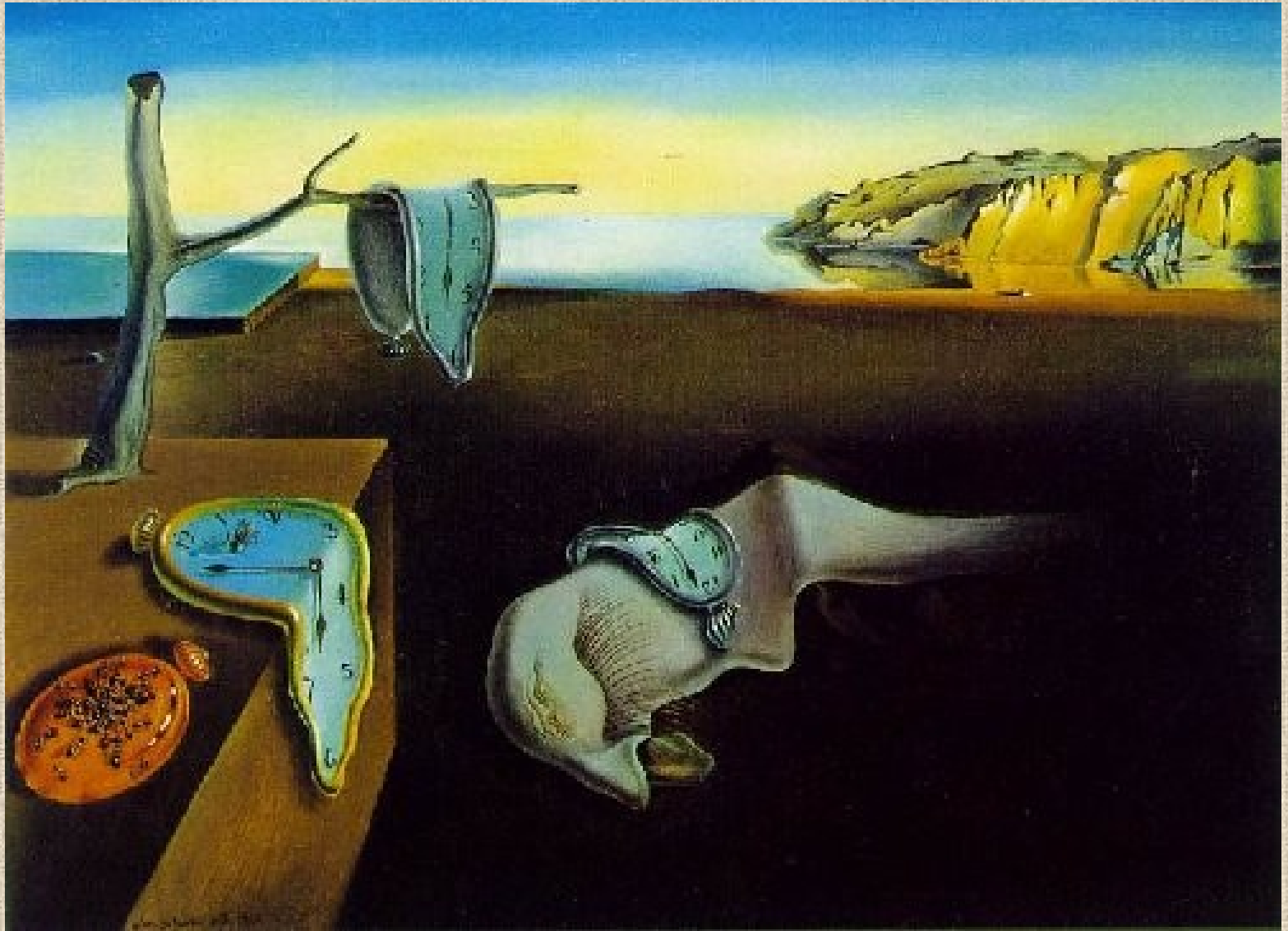
- **ABSOLUTNI** surrealizem

# Salvador Dali





Dali: Skušnja Sv. Antona

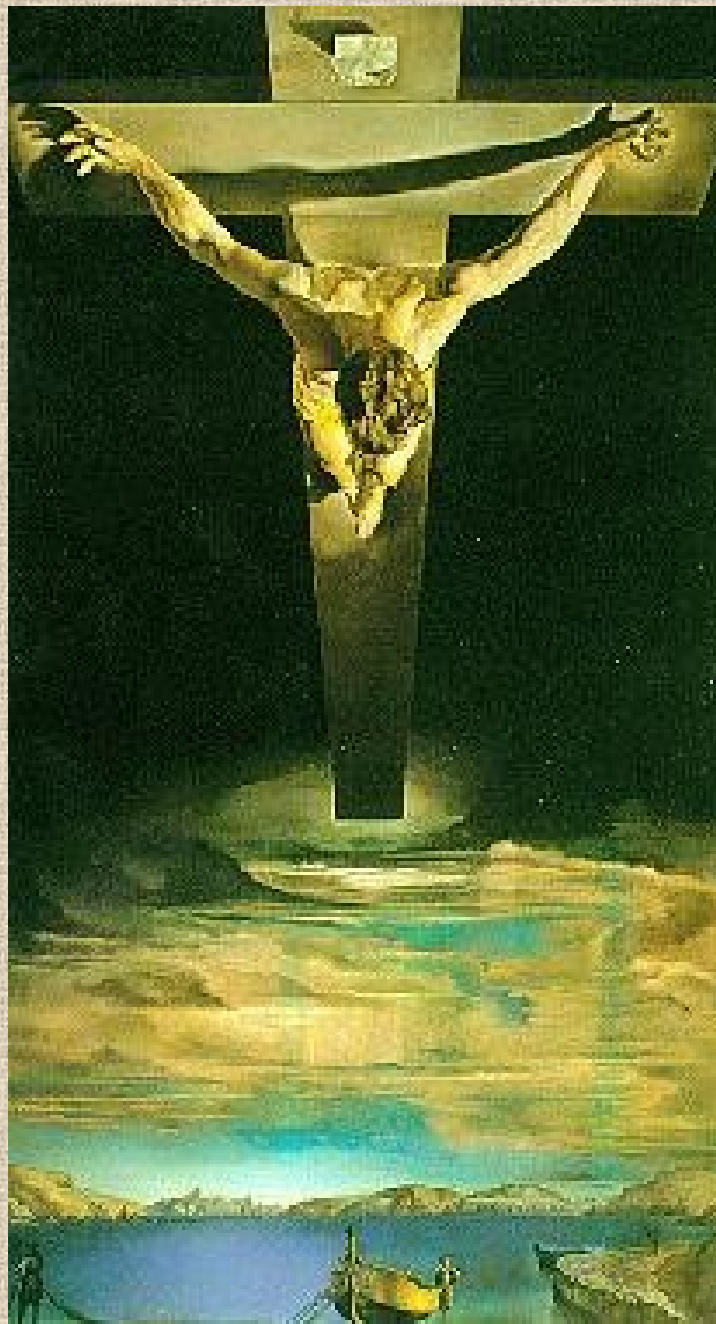


Dali: Mehke ure



Dali: Smrt

Dali: Kristus



# Max Ernest



Kralj Ojdip



Ernest: Sveta  
Cecilija



Ernest: Valujoča  
ženska





Ernest: Celo mesto

# Rene Magritte



Avtoportret



Magritte: Ključ sanj

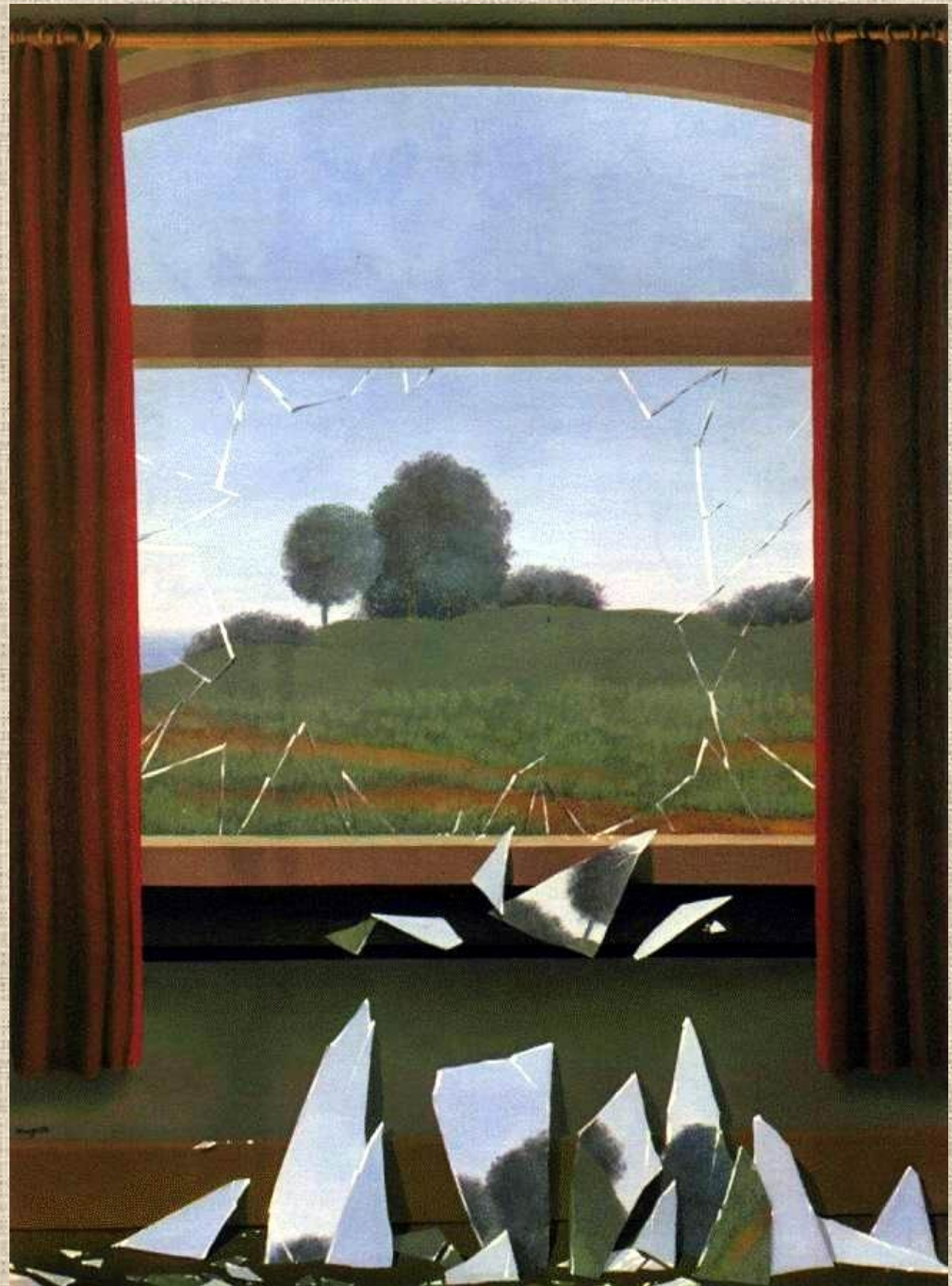


Magritte: To ni pipa

Magritte:  
Imperij luči



Magritte: Črepinje





# Paul Delvaux





Delvaux

# Alberto Giacometti



# Andre Masson



Služkinje

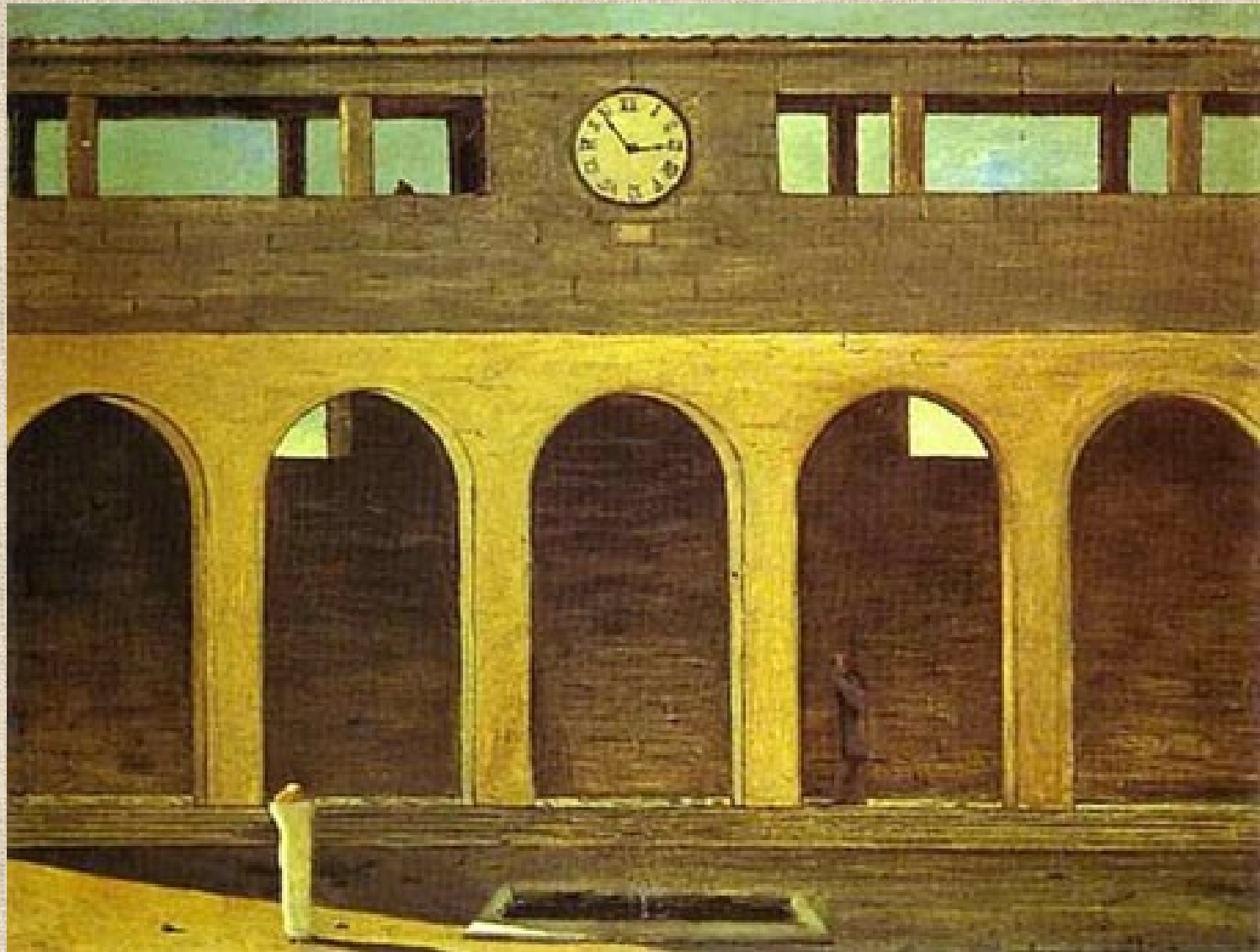


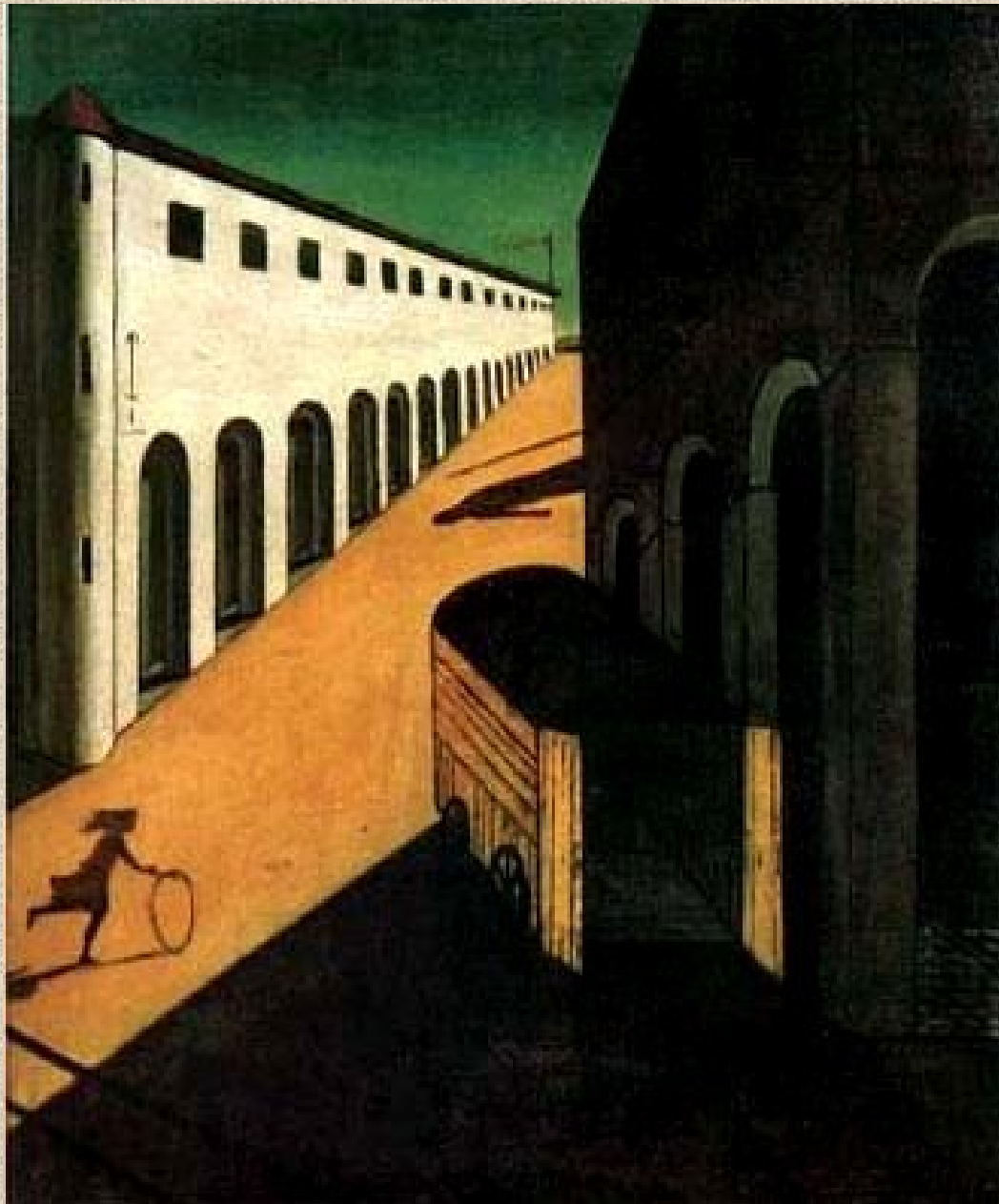
Masson: Metafizično

# Brassai



# Giorgio de Chirico





Chirico



# Hans Arp



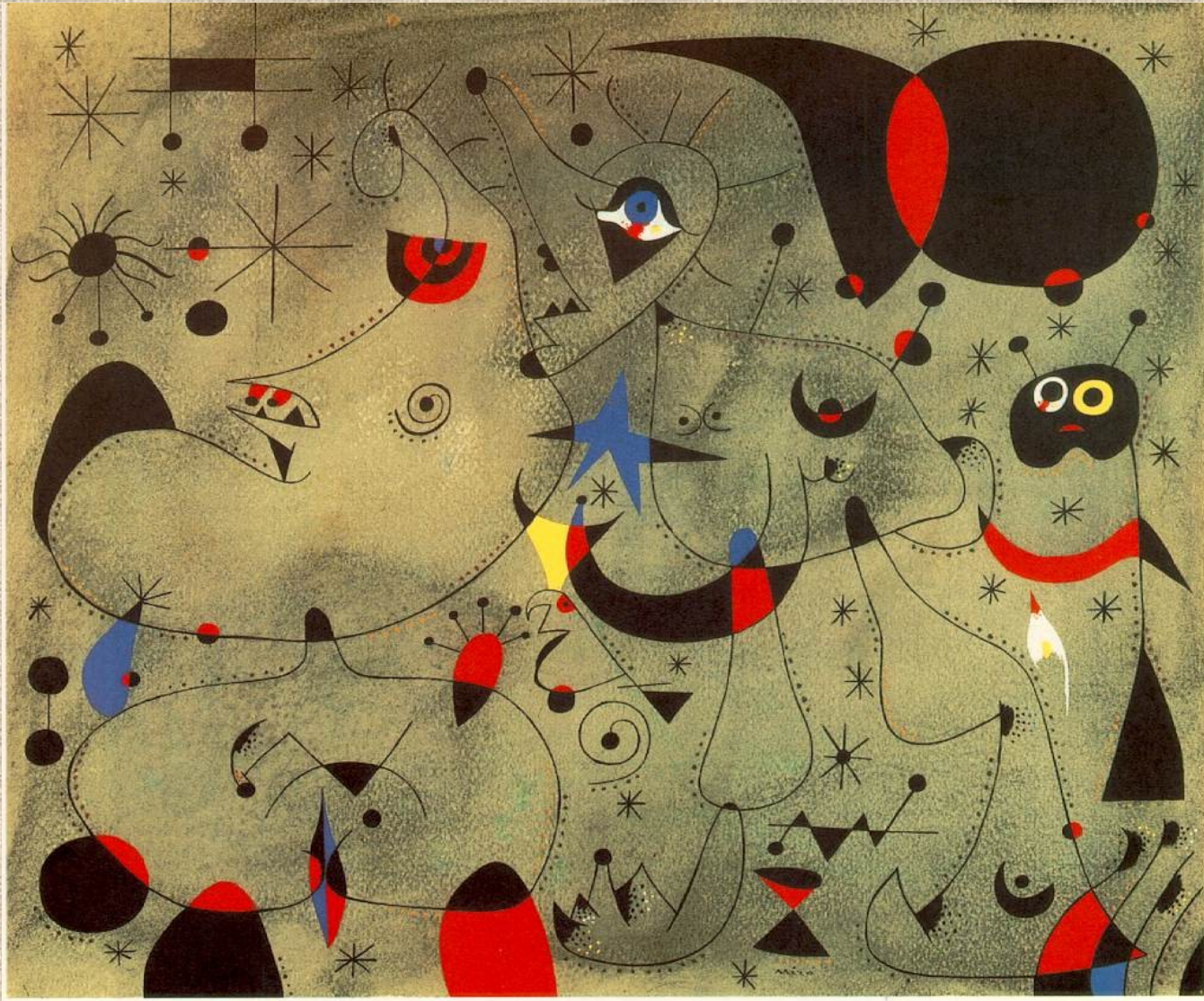
# Hans Bellmer





Bellmer

# Joan Miro



Nokturna

Miro





Miro



Miró



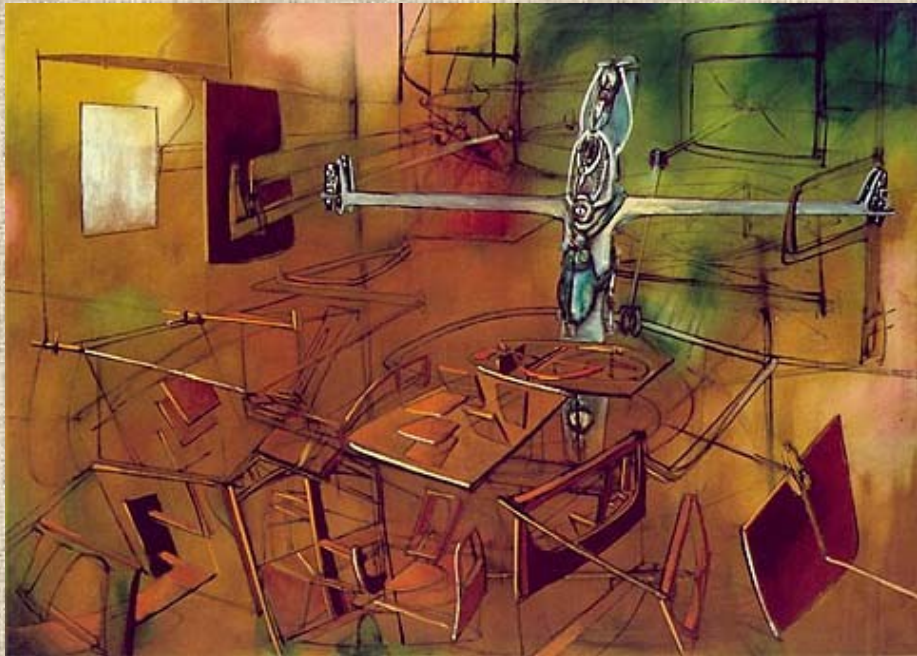
Miró



# Man Ray



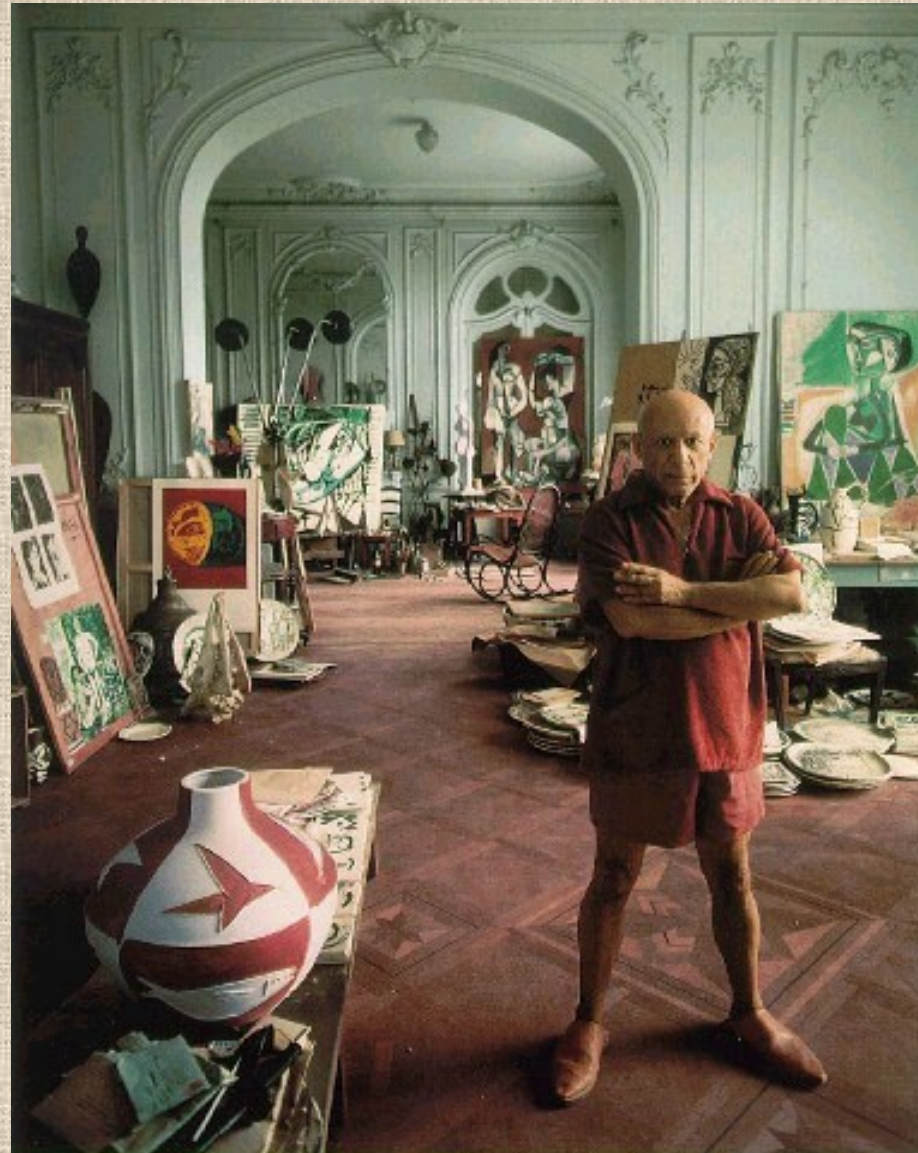
# Matta



# Maret Oppenheim



# Pablo Picasso





Picasso: Avignonske gospodične



Picasso: Trije muzikanti



**"Woman" by Pablo Picasso**  
[www.danaellyn.com](http://www.danaellyn.com)



Picasso: Revni ljudje



# Paul Klee



Klee



# Wilfredo Lam



# Yves Tanguy



A surreal scene featuring a multi-story building facade with a red roof and numerous windows. The sky above is filled with a dense pattern of tiny, identical figures in dark suits and hats. Larger, more detailed versions of these figures are positioned on the roof and in front of the building. The text "THE END" is overlaid in the center in a large, pink, serif font.

THE  
END